



**CZECH SKI & SNOWBOARD** SINCE 1903



AutoPalace®

**MONZAS**

**gopass**

**VEOLIA**



## Mistrovství České republiky staršího žactva v běhu na lyžích s mezinárodní účastí

## Výsledková listina

### Soutěžní výbor

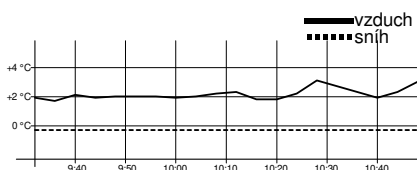
Technický delegát:	Tomáš Korbelař
Asistent T.D.	Markéta Augustiňáková
Ředitel závodu	Arnošt Hlaváček
Zástupce STK	Iveta Roubíčková

### Technická data

Start závodu	10:00
Konec závodu	14:10

## Žákyně starší 2011

### 3 km klasicky



### Technická data

Homologace	----
Okruhy	2 x 1,3 km
HD, MC, TC	----
Start, konec	10:00, 10:39
Počasí	oblačno

Poř.	Číslo	Jméno	Reg.	Roč.	Klub	1,3 km	2. kolo	Čas	Ztráta
------	-------	-------	------	------	------	--------	---------	-----	--------

Mistrem České republiky pro rok 2024 se stává **KORNFELDOVÁ Amálie**, Olfín Car Ski Team Trutnov

1.	3	<b>KORNFELDOVÁ Amálie</b>		2011	TRUT	4:18.0 (2)	4:37.2 (1)	<b>8:55.3</b>	
2.	1	<b>RANDÁKOVÁ Jana</b>		2011	SOSY	4:17.9 (1)	4:40.5 (2)	<b>8:58.4</b>	3.1
3.	41	<b>RŮCKOVÁ Eva</b>		2011	KBHA	4:23.8 (3)	4:47.0 (5)	<b>9:10.9</b>	15.6
4.	8	<b>HOLUBOVÁ Anika</b>		2011	SKJA	4:29.7 (6)	4:45.5 (4)	<b>9:15.2</b>	19.9
5.	51	<b>ZUZÁNKOVÁ Anna</b>		2011	SPVR	4:35.5 (11)	4:41.1 (3)	<b>9:16.7</b>	21.4
6.	10	<b>FEJFAROVÁ Sofie</b>		2011	JBCN	4:26.8 (5)	4:52.9 (8)	<b>9:19.7</b>	24.4
7.	6	<b>JEDLIČKOVÁ Tereza</b>		2011	SKSV	4:31.2 (8)	4:50.8 (7)	<b>9:22.0</b>	26.7
8.	23	<b>DUBCOVÁ Marie</b>		2011	JBCN	4:35.4 (10)	4:48.6 (6)	<b>9:24.0</b>	28.7
9.	5	<b>KOHOUTOVÁ Edita</b>		2011	DULI	4:26.0 (4)	4:58.1 (13)	<b>9:24.2</b>	28.9
10.	4	<b>DOSEDĚLOVÁ Eva</b>		2011	SOSY	4:30.4 (7)	4:55.7 (10)	<b>9:26.2</b>	30.9
11.	15	<b>BERANOVÁ Barbora</b>		2011	SPVR	4:31.7 (9)	4:54.9 (9)	<b>9:26.7</b>	31.4
12.	52	<b>HARTMANOVÁ Eliška</b>		2011	SPLE	4:39.9 (13)	4:56.1 (11)	<b>9:36.0</b>	40.7
13.	19	<b>KOROTVIČKOVÁ Ela</b>		2011	STUD	4:36.6 (12)	4:59.7 (14)	<b>9:36.3</b>	41.0
14.	13	<b>ŠÍMOVÁ Viktorie</b>		2011	SKST	4:45.2 (15)	4:57.7 (12)	<b>9:42.9</b>	47.6
15.	9	<b>KAJÍNKOVÁ Ina</b>		2011	DULI	4:40.2 (14)	5:05.7 (16)	<b>9:46.0</b>	50.7
16.	49	<b>NDUWIMANA Ania</b>		2011	SNKV	4:48.0 (17)	5:05.2 (15)	<b>9:53.2</b>	57.9
17.	2	<b>HLISNÍKOVÁ Anna Marie</b>		2011	LOTE	4:49.0 (18)	5:07.6 (18)	<b>9:56.6</b>	1:01.3
18.	26	<b>KUBÁTOVÁ Pavla</b>		2011	STUD	4:51.4 (22)	5:06.2 (17)	<b>9:57.7</b>	1:02.4
19.	7	<b>MAREČKOVÁ Emma</b>		2011	SKVM	4:46.4 (16)	5:16.1 (24)	<b>10:02.5</b>	1:07.2
20.	24	<b>KABRIELOVÁ Marie</b>		2011	DULI	4:51.0 (21)	5:12.0 (19)	<b>10:03.0</b>	1:07.7
21.	17	<b>GAISLEROVÁ Sára</b>		2011	LOTE	4:52.3 (23)	5:12.7 (20)	<b>10:05.1</b>	1:09.8
22.	16	<b>ÖNER Eda</b>		2011	ZDRP	4:53.3 (24)	5:15.4 (23)	<b>10:08.8</b>	1:13.5
23.	18	<b>ČERNÁ Patricie</b>		2011	NMNM	4:57.4 (27)	5:18.2 (25)	<b>10:15.7</b>	1:20.4
24.	43	<b>VÍTKOVÁ Patricie</b>		2011	ZDAS	4:49.0 (19)	5:27.0 (28)	<b>10:16.0</b>	1:20.7
25.	20	<b>JUNGOVÁ Karolína</b>		2011	SOSY	5:03.5 (31)	5:13.6 (21)	<b>10:17.2</b>	1:21.9
26.	14	<b>MAYOVÁ Veronika</b>		2011	DULI	4:49.1 (20)	5:28.8 (30)	<b>10:17.9</b>	1:22.6

24.2.2024

Harrachov

TJ Dukla Liberec z.s., TJ Jiskra Harrachov z.s.

24.2.2024 15:19

timing by sport-casomira.cz

Strana 1 z 11

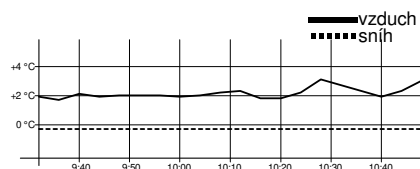


Partneři  
závodu:



# Žákyně starší 2011

## 3 km klasicky



### Technická data

Homologace	----
Okruhy	2 x 1,3 km
HD, MC, TC	----
Start, konec	10:00, 10:39
Počasí	oblačno

Poř.	Číslo	Jméno	Reg.	Roč.	Klub	1,3 km	2. kolo	Čas	Ztráta
27.	11	KNILLOVÁ Anna		2011	SKIP	4:55.7 (26)	5:26.6 (27)	<b>10:22.4</b>	1:27.1
28.	46	PŠENKOVÁ Tereza		2011	KBTR	5:09.2 (35)	5:13.9 (22)	<b>10:23.2</b>	1:27.9
29.	22	HANČOVÁ Adéla		2011	SKHA	4:53.3 (25)	5:34.5 (32)	<b>10:27.9</b>	1:32.6
30.	50	CHALOUPKOVÁ Renata		2011	SKBR	5:01.0 (28)	5:28.6 (29)	<b>10:29.6</b>	1:34.3
31.	12	KUKLÍKOVÁ Sofie		2011	SKIJ	5:04.5 (32)	5:25.8 (26)	<b>10:30.3</b>	1:35.0
32.	21	MOHVALDOVÁ Anežka		2011	HSKB	5:03.1 (29)	5:35.7 (36)	<b>10:38.9</b>	1:43.6
<b>33.</b>	<b>44</b>	<b>SOUKUPOVÁ Šárka</b>		<b>2011</b>	<b>LKAS</b>	<b>5:03.1 (30)</b>	<b>5:38.6 (40)</b>	<b>10:41.8</b>	<b>1:46.5</b>
34.	30	JUŘÁTKOVÁ Eleni		2011	FEJE	5:07.3 (33)	5:38.8 (41)	<b>10:46.1</b>	1:50.8
35.	25	FRYBLÍKOVÁ Anna		2011	RDRY	5:11.6 (36)	5:34.9 (33)	<b>10:46.5</b>	1:51.2
36.	34	KORITÝÁKOVÁ Izabela		2011	FEJE	5:20.5 (38)	5:29.7 (31)	<b>10:50.3</b>	1:55.0
37.	31	HOLČÁKOVÁ Alžběta		2011	SOKN	5:15.1 (37)	5:42.2 (44)	<b>10:57.3</b>	2:02.0
38=	42	HOLUBCOVÁ Tereza		2011	SKIJ	5:23.5 (42)	5:34.9 (34)	<b>10:58.4</b>	2:03.1
38=	45	NOVOTNÁ Dominika		2011	SPVR	5:08.2 (34)	5:50.2 (47)	<b>10:58.4</b>	2:03.1
40=	35	KOSTKOVÁ Eliška		2011	DULI	5:24.1 (43)	5:35.6 (35)	<b>10:59.8</b>	2:04.5
40=	48	TŮMOVÁ Magdalena		2011	SKIP	5:21.4 (39)	5:38.3 (39)	<b>10:59.8</b>	2:04.5
42.	29	KOUTNÁ Klára		2011	NMNM	5:22.7 (41)	5:39.6 (42)	<b>11:02.4</b>	2:07.1
43.	28	MANN Sofia		2011	SKSK	5:26.8 (47)	5:37.5 (38)	<b>11:04.4</b>	2:09.1
44.	27	MATERNOVÁ Lenka		2011	SKIJ	5:21.6 (40)	5:47.2 (46)	<b>11:08.8</b>	2:13.5
45.	38	SMOLOVÁ Natálie		2011	SKSV	5:27.6 (48)	5:41.5 (43)	<b>11:09.1</b>	2:13.8
46.	36	ROUŠAVÁ Michaela		2011	SKSK	5:40.6 (52)	5:36.6 (37)	<b>11:17.3</b>	2:22.0
47.	32	ČERMÁKOVÁ Gabriela		2011	SKSV	5:32.3 (50)	5:45.1 (45)	<b>11:17.5</b>	2:22.2
48.	39	MELICHOVÁ Beáta		2011	TJTA	5:24.6 (45)	5:53.4 (48)	<b>11:18.0</b>	2:22.7
49.	53	VASIČKOVÁ Nella		2011	KBHA	5:24.3 (44)	5:54.8 (49)	<b>11:19.1</b>	2:23.8
50.	56	MIKUŠOVÁ Adéla		2011	TJTA	5:31.4 (49)	5:55.2 (50)	<b>11:26.6</b>	2:31.3
51.	33	DVOŘÁKOVÁ Nikol		2011	SNKV	5:26.7 (46)	6:07.1 (54)	<b>11:33.9</b>	2:38.6
52.	55	TURKOVÁ Klára		2011	SNKV	5:40.8 (53)	5:59.4 (52)	<b>11:40.3</b>	2:45.0
53.	54	LHOTÁKOVÁ Kristýna		2011	SOSK	5:38.7 (51)	6:03.3 (53)	<b>11:42.1</b>	2:46.8
54.	40	SLEZÁKOVÁ Kristýna		2011	SWSL	5:48.0 (54)	5:58.1 (51)	<b>11:46.1</b>	2:50.8
55.	37	HONZÍKOVÁ Petra		2011	SCPL	5:49.5 (55)	6:22.5 (55)	<b>12:12.1</b>	3:16.8
56.	47	KOZDEROVÁ Justýna		2011	PBKL	6:14.1 (56)	6:22.5 (56)	<b>12:36.7</b>	3:41.4

Výkonnostní třída do času do místa

I.	9:48.8	(15.)
II.	10:15.5	(22.)
III.	11:35.8	(51.)

Přihlášeno: 56

Startovalo: 56

Klasifikováno: 56

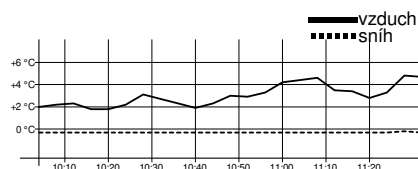
DNS: 0

DNF: 0

DSQ: 0

# Žakyně starší 2010

## 3 km klasicky



### Technická data

Homologace	----
Okruhy	2 x 1,3 km
HD, MC, TC	----
Start, konec	10:34, 11:25
Počasí	oblačno

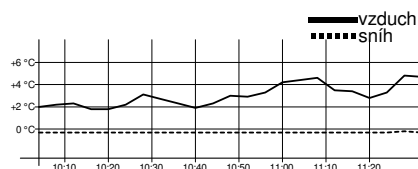
Poř.	Číslo	Jméno	Reg.	Roč.	Klub	1,3 km	2. kolo	Čas	Ztráta
------	-------	-------	------	------	------	--------	---------	-----	--------

Mistrem České republiky pro rok 2024 se stává MACHOVÁ Jana, Ski klub Jablonec nad Nisou

1.	64	<b>MACHOVÁ Jana</b>		2010	JBCN	3:58.2 (1)	4:15.1 (1)	<b>8:13.3</b>	
2.	65	<b>ERBENOVÁ Marianna</b>		2010	JBCN	4:07.9 (4)	4:15.5 (2)	<b>8:23.5</b>	10.2
3.	62	<b>CIPRYSOVÁ Magdaléna Lucie</b>		2010	SNKV	4:01.6 (3)	4:22.4 (4)	<b>8:24.1</b>	10.8
4.	119	<b>MÁLKOVÁ Lucie</b>		2010	SPLE	4:11.7 (6)	4:20.9 (3)	<b>8:32.6</b>	19.3
5.	63	<b>NOVÁKOVÁ Rozálie</b>		2010	JBCN	4:10.5 (5)	4:22.9 (5)	<b>8:33.5</b>	20.2
6.	61	<b>MASNICOVÁ Anna</b>		2010	DULI	4:00.3 (2)	4:39.2 (9)	<b>8:39.6</b>	26.3
7.	143	<b>HAVLÍČKOVÁ Rozálie</b>		2010	SPVR	4:13.6 (7)	4:27.4 (6)	<b>8:41.1</b>	27.8
8.	138	<b>HLADKÁ Anna</b>		2010	SPVR	4:20.9 (10)	4:32.5 (7)	<b>8:53.4</b>	40.1
9.	67	<b>BUĐÁRKOVÁ Laura</b>		2010	STUD	4:22.9 (11)	4:40.6 (10)	<b>9:03.5</b>	50.2
10.	135	<b>MARŠOUNOVÁ Anna</b>		2010	KBTR	4:27.7 (16)	4:36.8 (8)	<b>9:04.5</b>	51.2
11.	121	<b>FIŠNAROVÁ Hana</b>		2010	SPVR	4:19.3 (9)	4:46.3 (13)	<b>9:05.7</b>	52.4
12.	75	<b>NEBUSOVÁ Alžběta</b>		2010	DULI	4:23.9 (13)	4:43.1 (11)	<b>9:07.1</b>	53.8
13.	72	<b>HAKLOVÁ Antonie</b>		2010	SKIJ	4:16.9 (8)	4:53.1 (18)	<b>9:10.0</b>	56.7
14.	137	<b>JAKEŠOVÁ Lucie</b>		2010	SPLE	4:29.8 (18)	4:45.1 (12)	<b>9:15.0</b>	1:01.7
15.	70	<b>MADEROVÁ Pavla</b>		2010	SKIJ	4:26.4 (14)	4:50.0 (15)	<b>9:16.4</b>	1:03.1
16.	73	<b>HÁKOVÁ Barbora</b>		2010	STUD	4:32.7 (20)	4:46.6 (14)	<b>9:19.3</b>	1:06.0
17.	66	<b>HROMÁDKOVÁ Elen</b>		2010	TRUT	4:23.7 (12)	5:00.5 (20)	<b>9:24.2</b>	1:10.9
18.	83	<b>KRTIČKOVÁ Johana</b>		2010	SKIJ	4:31.8 (19)	4:54.2 (19)	<b>9:26.1</b>	1:12.8
19.	140	<b>PŮBALOVÁ Silvie</b>		2010	SKST	4:34.6 (22)	4:52.9 (17)	<b>9:27.5</b>	1:14.2
20.	85	<b>RŮŽIČKOVÁ Jana</b>		2010	SNKV	4:35.6 (23)	4:52.2 (16)	<b>9:27.9</b>	1:14.6
21.	68	<b>KURÁŇOVÁ Eliška</b>		2010	GZUB	4:27.1 (15)	5:09.3 (35)	<b>9:36.4</b>	1:23.1
22.	91	<b>MICHLOVÁ Tereza</b>		2010	SKSK	4:28.9 (17)	5:07.7 (31)	<b>9:36.7</b>	1:23.4
23.	122	<b>KLOUZOVÁ Kamila</b>		2010	STUD	4:38.2 (24)	5:02.3 (23)	<b>9:40.6</b>	1:27.3
24.	93	<b>VRBATOVÁ Barbora</b>		2010	SPVR	4:34.5 (21)	5:07.7 (30)	<b>9:42.2</b>	1:28.9
25.	86	<b>BUDINOVÁ Barbora</b>		2010	DULI	4:41.1 (26)	5:02.2 (22)	<b>9:43.3</b>	1:30.0
26.	76	<b>ŠPONAROVÁ Magdaléna</b>		2010	LOTE	4:45.8 (30)	5:02.4 (24)	<b>9:48.2</b>	1:34.9
27=	71	<b>HRNČIŘOVÁ Denisa</b>		2010	BKLM	4:41.7 (27)	5:07.1 (29)	<b>9:48.9</b>	1:35.6
27=	90	<b>ENDRYCHOVÁ Veronika</b>		2010	DULI	4:43.5 (28)	5:05.4 (27)	<b>9:48.9</b>	1:35.6
29.	84	<b>KREMSOVÁ Kateřina</b>		2010	SWSL	4:51.1 (38)	5:03.8 (25)	<b>9:54.9</b>	1:41.6
30.	87	<b>HROUDOVÁ Anežka</b>		2010	DULI	4:40.4 (25)	5:14.9 (42)	<b>9:55.4</b>	1:42.1
31=	81	<b>VIČANOVÁ Barbora</b>		2010	SKVM	4:47.2 (33)	5:08.6 (32)	<b>9:55.8</b>	1:42.5
31=	110	<b>VALENTOVÁ Ema</b>		2010	SPVR	4:53.7 (42)	5:02.1 (21)	<b>9:55.8</b>	1:42.5
33.	105	<b>SKÁLOVÁ Monika</b>		2010	SKSK	4:46.8 (32)	5:09.1 (34)	<b>9:56.0</b>	1:42.7
34.	77	<b>KERELOVÁ Kristýna</b>		2010	DULI	4:45.3 (29)	5:11.8 (38)	<b>9:57.2</b>	1:43.9
35.	69	<b>KOŽÁROVÁ Veronika</b>		2010	NMNM	4:51.9 (40)	5:05.7 (28)	<b>9:57.6</b>	1:44.3
36.	142	<b>BARTOŠOVÁ Kristýna</b>		2010	JBCN	4:54.1 (43)	5:05.3 (26)	<b>9:59.4</b>	1:46.1
37.	74	<b>MOHVALDOVÁ Vendula</b>		2010	HSKB	4:49.9 (37)	5:09.8 (36)	<b>9:59.8</b>	1:46.5
38.	123	<b>VYTLAČILOVÁ Adéla</b>		2010	ROPU	4:49.3 (35)	5:11.6 (37)	<b>10:00.9</b>	1:47.6
39.	98	<b>LEBEDOVÁ Veronika</b>		2010	RAVY	4:52.2 (41)	5:08.8 (33)	<b>10:01.1</b>	1:47.8
40.	97	<b>STEHLÍKOVÁ Aneta</b>		2010	SKST	4:49.4 (36)	5:11.9 (40)	<b>10:01.4</b>	1:48.1
41.	141	<b>MIŠEKOVÁ Lucie</b>		2010	RAVY	4:56.9 (45)	5:11.9 (39)	<b>10:08.8</b>	1:55.5
42.	80	<b>SMUTNÁ Adina</b>		2010	SKPU	4:48.9 (34)	5:21.0 (46)	<b>10:09.9</b>	1:56.6
43.	88	<b>MALÍKOVÁ Ella</b>		2010	SCPL	4:45.9 (31)	5:25.1 (49)	<b>10:11.1</b>	1:57.8
44.	79	<b>VODRÁŽKOVÁ Barbora</b>		2010	UKPL	4:51.7 (39)	5:20.1 (43)	<b>10:11.8</b>	1:58.5

# Žákyně starší 2010

## 3 km klasicky



### Technická data

Homologace	----
Okruhy	2 x 1,3 km
HD, MC, TC	----
Start, konec	10:34, 11:25
Počasí	oblačno

Poř.	Číslo	Jméno	Reg.	Roč.	Klub	1,3 km	2. kolo	Čas	Ztráta
45.	116	KUNČÍKOVÁ Magdalena		2010	SPVR	5:00.2 (49)	5:12.6 (41)	<b>10:12.8</b>	1:59.5
46.	82	ŠPERLOVÁ Anna		2010	SNKV	4:58.0 (46)	5:20.2 (44)	<b>10:18.2</b>	2:04.9
47.	124	KNÁPKOVÁ Anežka		2010	SPLE	5:01.8 (52)	5:21.6 (47)	<b>10:23.4</b>	2:10.1
48.	134	JAKLOVÁ Sofie Viktorie		2010	ROPU	5:03.6 (55)	5:23.8 (48)	<b>10:27.5</b>	2:14.2
49.	78	KOPŘIVOVÁ Adéla		2010	NMNM	5:03.0 (53)	5:25.5 (50)	<b>10:28.6</b>	2:15.3
50.	94	ČECHOVÁ Anna		2010	SCPL	5:08.5 (58)	5:20.9 (45)	<b>10:29.5</b>	2:16.2
51.	99	HURTOVÁ Ema		2010	SOKN	4:59.4 (48)	5:31.8 (51)	<b>10:31.3</b>	2:18.0
52.	96	JONÁŠOVÁ Štěpánka		2010	TJTA	5:04.8 (56)	5:32.0 (52)	<b>10:36.9</b>	2:23.6
53=	95	ŘEŽABOVÁ Nikola		2010	SOSY	5:03.5 (54)	5:34.1 (53)	<b>10:37.6</b>	2:24.3
53=	107	PŘIKRYLOVÁ Maya		2010	DULI	4:55.6 (44)	5:41.9 (59)	<b>10:37.6</b>	2:24.3
55.	89	LEDEROVÁ Aneta		2010	SKJA	5:00.4 (50)	5:37.3 (54)	<b>10:37.8</b>	2:24.5
56.	101	PREISLEROVÁ Karolína		2010	SKIJ	5:01.8 (51)	5:43.7 (61)	<b>10:45.5</b>	2:32.2
57.	128	RYBÍNOVÁ Anežka		2010	SKHA	5:07.9 (57)	5:39.1 (56)	<b>10:47.1</b>	2:33.8
58.	127	STARÁ Klára		2010	LSKL	5:10.4 (60)	5:39.8 (57)	<b>10:50.2</b>	2:36.9
59.	109	SLEZÁKOVÁ Barbora		2010	SWSL	5:11.6 (61)	5:42.1 (60)	<b>10:53.8</b>	2:40.5
60.	133	HAMERSKÁ Adéla		2010	ZDAS	5:23.8 (67)	5:38.1 (55)	<b>11:02.0</b>	2:48.7
61.	103	PORTZ Viktoria		2010	SKPU	5:20.8 (65)	5:41.3 (58)	<b>11:02.2</b>	2:48.9
62.	102	SVOBODOVÁ Alena		2010	FEJE	4:58.3 (47)	6:05.3 (74)	<b>11:03.6</b>	2:50.3
63.	106	BLAHOUTOVÁ Klára		2010	SNKV	5:15.4 (62)	5:50.6 (63)	<b>11:06.0</b>	2:52.7
64.	92	HAMÁČKOVÁ Alžběta		2010	SKHA	5:08.6 (59)	6:02.2 (72)	<b>11:10.8</b>	2:57.5
65.	139	BŘEČKOVÁ Ellen		2010	SOSY	5:29.6 (71)	5:44.3 (62)	<b>11:14.0</b>	3:00.7
66.	129	BAROCHOVÁ Vanesa		2010	LSKL	5:17.9 (64)	5:58.3 (68)	<b>11:16.2</b>	3:02.9
67.	130	ABSOLONOVÁ Beata Eva		2010	SKPU	5:15.7 (63)	6:00.7 (70)	<b>11:16.4</b>	3:03.1
68.	104	BARTOVÁ Nela		2010	LSKL	5:26.3 (69)	5:51.3 (64)	<b>11:17.7</b>	3:04.4
69.	114	PINDUROVÁ Anna		2010	DLOM	5:25.8 (68)	5:52.8 (65)	<b>11:18.6</b>	3:05.3
70.	132	PETÍŘOVÁ Klára		2010	LSKL	5:21.5 (66)	5:57.8 (67)	<b>11:19.3</b>	3:06.0
71.	111	NEDVĚDOVÁ Natálie		2010	DULI	5:26.6 (70)	6:00.4 (69)	<b>11:27.1</b>	3:13.8
72.	113	KOLEČKOVÁ Barbora		2010	GZUB	5:34.3 (73)	5:56.4 (66)	<b>11:30.7</b>	3:17.4
73.	112	ŠIMKOVÁ Veronika		2010	LSKL	5:32.9 (72)	6:05.0 (73)	<b>11:38.0</b>	3:24.7
74.	125	KALÁŠKOVÁ Kornélie		2010	PBKL	5:40.1 (75)	6:01.6 (71)	<b>11:41.7</b>	3:28.4
75.	108	HURTOVÁ Alice		2010	SKVM	5:37.6 (74)	6:05.4 (75)	<b>11:43.0</b>	3:29.7
76.	117	LEMSTROVÁ Ellen Joy		2010	RDRY	5:52.6 (77)	6:11.9 (76)	<b>12:04.5</b>	3:51.2
77.	118	KASZPER Izabela		2010	SKIM	5:59.9 (78)	6:19.2 (77)	<b>12:19.1</b>	4:05.8
78.	131	ZÁVADOVÁ Kateřina		2010	GZUB	5:50.8 (76)	6:31.4 (79)	<b>12:22.2</b>	4:08.9
79.	120	STRNADOVÁ Natálie		2010	SKBB	6:20.8 (79)	6:23.6 (78)	<b>12:44.5</b>	4:31.2
80.	115	KOLASOVÁ Vanesa		2010	DLOM	6:23.5 (81)	6:36.7 (80)	<b>13:00.2</b>	4:46.9
81.	136	METELKOVÁ Šárka		2010	RDRY	6:21.8 (80)	6:43.5 (81)	<b>13:05.3</b>	4:52.0
82.	126	DOBEŠOVÁ Johanka		2010	HSKB	6:36.3 (82)	7:03.0 (82)	<b>13:39.3</b>	5:26.0
DNS	100	HARCUBOVÁ Magdaléna		2010	TJTA				nestartoval(a)

Výkonnostní třída do času do místa

I.	9:02.6	(8.)
II.	9:27.2	(18.)
III.	10:41.2	(55.)

Přihlášeno: 83

Startovalo: 82

Klasifikováno: 82

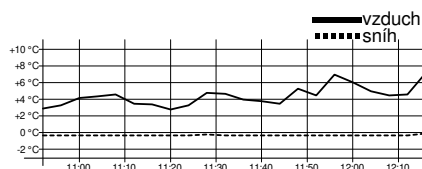
DNS: 1

DNF: 0

DSQ: 0

# Žákyně starší 2009 U15

## 4 km klasicky



### Technická data

Homologace	----
Okruhy	3 x 1,3 km
HD, MC, TC	----
Start, konec	11:21, 12:07
Počasí	oblačno

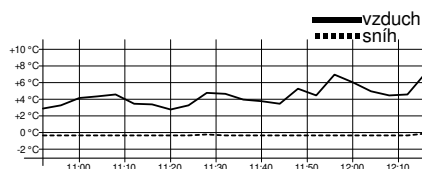
Poř.	Číslo	Jméno	Roč.	Klub	1,3 km	2. kolo	2,6 km	3. kolo	Čas	Ztráta
------	-------	-------	------	------	--------	---------	--------	---------	-----	--------

Mistrem České republiky pro rok 2024 se stává NOVÁKOVÁ Nela, Ski klub Jablonec nad Nisou

1.	4	<b>NOVÁKOVÁ Nela</b>	2009	JBCN	4:01.0 (1)	4:24.6 (1)	8:25.6 (1)	4:26.2 (1)	<b>12:51.9</b>	
2.	2	<b>PLECHÁČOVÁ Nikola</b>	2009	SKIJ	4:05.2 (3)	4:34.3 (3)	8:39.6 (2)	4:55.1 (12)	<b>13:34.7</b>	42.8
3.	6	<b>SALABOVÁ Pavlína</b>	2009	SKIJ	4:14.3 (7)	4:31.0 (2)	8:45.3 (3)	4:51.5 (8)	<b>13:36.9</b>	45.0
4.	43	<b>KADLECOVÁ Žofie</b>	2009	SCPL	4:21.8 (11)	4:40.5 (6)	9:02.3 (8)	4:38.8 (2)	<b>13:41.2</b>	49.3
5.	8	<b>DLOUHÁ Daniela</b>	2009	LSKL	4:11.3 (6)	4:39.9 (5)	8:51.3 (5)	4:50.7 (6)	<b>13:42.0</b>	50.1
6.	5	<b>HORKÁ Lucie</b>	2009	TRUT	4:09.2 (4)	4:47.1 (10)	8:56.4 (6)	4:48.9 (5)	<b>13:45.3</b>	53.4
7.	7	<b>BROŽOVÁ Adéla</b>	2009	LSKL	4:15.6 (8)	4:43.3 (7)	8:59.0 (7)	4:51.0 (7)	<b>13:50.0</b>	58.1
8.	14	<b>MUDROVÁ Beáta</b>	2009	FEJE	4:36.7 (24)	4:37.8 (4)	9:14.6 (13)	4:43.6 (3)	<b>13:58.2</b>	1:06.3
9.	1	<b>ŽILINSKÁ Nikola</b>	2009	LOTE	4:04.6 (2)	4:44.5 (8)	8:49.1 (4)	5:10.1 (23)	<b>13:59.3</b>	1:07.4
10.	25	<b>ŠIROKÁ Magdaléna</b>	2009	JBCN	4:15.7 (9)	4:49.8 (13)	9:05.5 (9)	4:54.7 (10)	<b>14:00.2</b>	1:08.3
11.	55	<b>TOMÁŠKOVÁ Karolína</b>	2009	SPVR	4:28.2 (16)	4:49.2 (12)	9:17.4 (14)	4:45.2 (4)	<b>14:02.7</b>	1:10.8
12.	11	<b>MAREČKOVÁ Olivie</b>	2009	SKIJ	4:25.6 (13)	4:53.3 (15)	9:19.0 (15)	4:55.1 (11)	<b>14:14.1</b>	1:22.2
13.	3	<b>SUCHARDOVÁ Ella</b>	2009	SKIJ	4:10.2 (5)	4:57.7 (19)	9:08.0 (11)	5:07.0 (18)	<b>14:15.0</b>	1:23.1
14.	54	<b>JANDUROVÁ Veronika</b>	2009	SPVR	4:19.9 (10)	4:45.6 (9)	9:05.6 (10)	5:11.1 (26)	<b>14:16.8</b>	1:24.9
15.	15	<b>LOŠŤÁKOVÁ Ela</b>	2009	SNKV	4:36.6 (23)	4:53.5 (16)	9:30.1 (19)	4:51.6 (9)	<b>14:21.7</b>	1:29.8
16.	23	<b>VANIČKOVÁ Zuzana</b>	2009	SPVR	4:22.0 (12)	4:48.8 (11)	9:10.9 (12)	5:10.9 (24)	<b>14:21.9</b>	1:30.0
17.	10	<b>MENCLOVÁ Luisa</b>	2009	SCPL	4:34.2 (20)	4:54.2 (18)	9:28.5 (18)	4:55.8 (13)	<b>14:24.3</b>	1:32.4
18.	59	<b>KONVALINKOVÁ Linda</b>	2009	KBHA	4:29.8 (18)	4:51.7 (14)	9:21.5 (16)	5:07.5 (19)	<b>14:29.0</b>	1:37.1
19.	13	<b>LUKEŠOVÁ Natálie</b>	2009	SKIJ	4:27.1 (15)	5:03.6 (23)	9:30.7 (20)	5:08.5 (22)	<b>14:39.3</b>	1:47.4
20.	34	<b>PORKERTOVIK Viktorie</b>	2009	JBCN	4:38.4 (25)	4:54.1 (17)	9:32.5 (21)	5:08.0 (21)	<b>14:40.5</b>	1:48.6
21.	19	<b>BLAŽEJOVÁ Terezie</b>	2009	DULI	4:38.4 (26)	5:00.4 (21)	9:38.9 (23)	5:01.8 (14)	<b>14:40.7</b>	1:48.8
22.	18	<b>GAISLEROVÁ Hana</b>	2009	LOTE	4:25.8 (14)	4:59.6 (20)	9:25.5 (17)	5:17.8 (33)	<b>14:43.3</b>	1:51.4
23.	62	<b>PROKEŠOVÁ Adéla</b>	2009	SKIJ	4:40.6 (29)	5:03.2 (22)	9:43.8 (24)	5:03.9 (16)	<b>14:47.7</b>	1:55.8
24.	26	<b>ŠIROVÁ Marie</b>	2009	DULI	4:36.5 (22)	5:09.3 (27)	9:45.9 (26)	5:05.2 (17)	<b>14:51.1</b>	1:59.2
25.	49	<b>BORČICKÁ Denisa</b>	2009	SWSL	4:41.8 (31)	5:04.6 (24)	9:46.4 (27)	5:10.9 (25)	<b>14:57.4</b>	2:05.5
26.	17	<b>KUČEROVÁ Kateřina</b>	2009	ZDRP	4:42.8 (33)	5:08.7 (26)	9:51.5 (29)	5:07.6 (20)	<b>14:59.2</b>	2:07.3
27.	57	<b>URBANOVIK Anna</b>	2009	SPLE	4:47.7 (37)	5:10.2 (29)	9:58.0 (33)	5:02.5 (15)	<b>15:00.5</b>	2:08.6
28.	20	<b>ŘEHOŘOVÁ Štěpánka</b>	2009	JBCN	4:28.4 (17)	5:05.9 (25)	9:34.3 (22)	5:26.8 (38)	<b>15:01.2</b>	2:09.3
29.	31	<b>BLAŽKOVÁ Monika</b>	2009	SKJA	4:39.6 (28)	5:11.8 (32)	9:51.4 (28)	5:16.7 (31)	<b>15:08.2</b>	2:16.3
30.	16	<b>ŠVAGEROVÁ Anna</b>	2009	SKVM	4:43.7 (34)	5:11.4 (30)	9:55.2 (31)	5:15.3 (29)	<b>15:10.5</b>	2:18.6
31.	33	<b>JELÍNKOVÁ Aneta</b>	2009	SWSL	4:46.4 (36)	5:12.8 (33)	9:59.3 (34)	5:17.2 (32)	<b>15:16.5</b>	2:24.6
32.	9	<b>KRÁČMAROVÁ Anna</b>	2009	BKLM	4:41.9 (32)	5:09.5 (28)	9:51.5 (30)	5:25.0 (36)	<b>15:16.6</b>	2:24.7
33.	60	<b>KOUTNÍKOVÁ Eva Rozáři</b>	2009	SPLE	4:52.0 (40)	5:14.7 (34)	10:06.8 (38)	5:11.4 (27)	<b>15:18.2</b>	2:26.3
34.	12	<b>BROŽÍKOVÁ Barbora</b>	2009	SKIJ	4:32.9 (19)	5:11.6 (31)	9:44.5 (25)	5:35.2 (45)	<b>15:19.8</b>	2:27.9
35.	21	<b>MORAVCOVÁ Bára</b>	2009	SKSV	4:40.9 (30)	5:15.6 (35)	9:56.5 (32)	5:23.7 (35)	<b>15:20.3</b>	2:28.4
36.	44	<b>SVOBODOVÁ Klára</b>	2009	SPLE	4:38.5 (27)	5:21.6 (39)	10:00.2 (35)	5:27.4 (39)	<b>15:27.7</b>	2:35.8
37.	46	<b>ŠRŮTKOVÁ Vendula</b>	2009	BKLM	4:51.6 (39)	5:29.7 (43)	10:21.3 (41)	5:15.8 (30)	<b>15:37.1</b>	2:45.2
38.	27	<b>VONDRUŠKOVÁ Veronika</b>	2009	SKSV	4:56.5 (42)	5:16.5 (36)	10:13.0 (39)	5:25.1 (37)	<b>15:38.1</b>	2:46.2
39.	48	<b>MOLKOVÁ Dorota</b>	2009	ROPU	5:01.1 (43)	5:20.1 (38)	10:21.3 (42)	5:19.6 (34)	<b>15:40.9</b>	2:49.0
40.	30	<b>POHLOVÁ Matylda</b>	2009	SKIP	4:51.3 (38)	5:26.9 (40)	10:18.3 (40)	5:31.2 (42)	<b>15:49.5</b>	2:57.6
41.	24	<b>GULTOVÁ Eliška</b>	2009	BKLM	4:35.9 (21)	5:27.6 (41)	10:03.6 (36)	5:46.3 (53)	<b>15:49.9</b>	2:58.0
42.	38	<b>HAVRÁNKOVÁ Anna</b>	2009	DULI	5:11.4 (52)	5:29.4 (42)	10:40.8 (46)	5:14.4 (28)	<b>15:55.2</b>	3:03.3
43.	58	<b>KUBOVÁ Klára</b>	2009	SPLE	5:02.7 (45)	5:30.7 (44)	10:33.5 (43)	5:29.1 (41)	<b>16:02.7</b>	3:10.8
44.	40	<b>BENDOVIK Veronika</b>	2009	JBCN	4:52.1 (41)	5:41.5 (51)	10:33.7 (44)	5:32.7 (43)	<b>16:06.4</b>	3:14.5

# Žákyně starší 2009 U15

## 4 km klasicky



### Technická data

Homologace	----
Okruhy	3 x 1,3 km
HD, MC, TC	----
Start, konec	11:21, 12:07
Počasí	oblačno

Poř.	Číslo	Jméno	Roč.	Klub	1,3 km	2. kolo	2,6 km	3. kolo	Čas	Ztráta
45.	36	JENÍKOVÁ Amálie	2009	SKHA	5:07.6 (48)	5:36.4 (48)	10:44.1 (49)	5:27.8 (40)	<b>16:11.9</b>	3:20.0
46.	51	JAKUBÍKOVÁ Magda	2009	SKIM	4:44.1 (35)	5:20.0 (37)	10:04.2 (37)	6:12.4 (59)	<b>16:16.7</b>	3:24.8
47.	29	MOUČKOVÁ Libuše	2009	LOTE	5:06.0 (47)	5:31.6 (46)	10:37.6 (45)	5:43.4 (51)	<b>16:21.0</b>	3:29.1
48.	32	EIGNEROVÁ Eliška	2009	SKSV	5:01.5 (44)	5:39.9 (49)	10:41.5 (48)	5:40.7 (49)	<b>16:22.2</b>	3:30.3
49.	22	KŘIČKOVÁ Nela	2009	BKLM	5:05.3 (46)	5:41.7 (52)	10:47.0 (51)	5:35.3 (46)	<b>16:22.4</b>	3:30.5
50.	39	MRÁZOVÁ Ema	2009	ZDRP	5:08.0 (49)	5:32.9 (47)	10:41.0 (47)	5:42.4 (50)	<b>16:23.4</b>	3:31.5
51.	61	HAMÁČKOVÁ Anna	2009	SPVR	5:14.1 (53)	5:31.1 (45)	10:45.3 (50)	5:40.6 (48)	<b>16:25.9</b>	3:34.0
52.	52	PRECLÍKOVÁ Marie	2009	PBKL	5:10.8 (50)	5:43.6 (55)	10:54.5 (53)	5:32.7 (44)	<b>16:27.2</b>	3:35.3
53.	28	BERNÁTOVÁ Vendula	2009	SOKN	5:10.9 (51)	5:42.9 (54)	10:53.9 (52)	5:37.4 (47)	<b>16:31.3</b>	3:39.4
54.	56	PEKOVÁ Vanda	2009	SKSV	5:19.2 (56)	5:42.8 (53)	11:02.0 (55)	5:44.3 (52)	<b>16:46.4</b>	3:54.5
55.	53	KUIPER Simona Jana	2009	ZDRP	5:16.0 (55)	5:41.2 (50)	10:57.2 (54)	5:50.8 (55)	<b>16:48.1</b>	3:56.2
56.	35	ŠUPINOVÁ Kateřina	2009	SOKN	5:14.3 (54)	5:51.6 (57)	11:05.9 (56)	5:53.4 (56)	<b>16:59.4</b>	4:07.5
57.	41	KÁLALOVÁ Alexandra	2009	SOSY	5:22.5 (58)	5:50.3 (56)	11:12.8 (57)	5:47.2 (54)	<b>17:00.1</b>	4:08.2
58.	37	BERANOVÁ Sára	2009	SKIP	5:21.9 (57)	5:52.6 (58)	11:14.5 (58)	5:59.9 (58)	<b>17:14.5</b>	4:22.6
59.	45	BARTÁKOVÁ Vanessa	2009	PBKL	5:28.2 (59)	5:57.7 (59)	11:25.9 (59)	5:54.7 (57)	<b>17:20.6</b>	4:28.7
60.	42	FILIPOVÁ Vítězslava	2009	SKBR	5:38.9 (60)	6:20.2 (61)	11:59.2 (60)	6:21.1 (61)	<b>18:20.3</b>	5:28.4
61.	50	JINDŘÍŠKOVÁ Blanka	2009	HSKB	5:53.0 (61)	6:18.2 (60)	12:11.2 (61)	6:18.1 (60)	<b>18:29.3</b>	5:37.4
DNS	47	MAJOROVÁ Rozálie	2009	SKBB					nestartoval(a)	

Výkonnostní třída do času do místa

I.	14:09.0	(11.)
II.	14:47.6	(22.)
III.	16:43.4	(53.)

Přihlášeno: 62

Startovalo: 61

Klasifikováno: 61

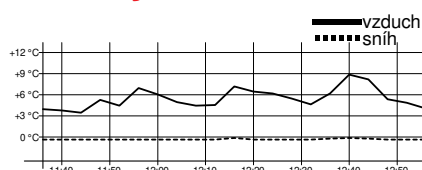
DNS: 1

DNF: 0

DSQ: 0

# Žáci starší 2011

## 4 km klasicky



### Technická data

Homologace	----
Okruhy	3 x 1,3 km
HD, MC, TC	----
Start, konec	12:04, 12:46
Počasí	oblačno

Poř.	Číslo	Jméno	Roč.	Klub	1,3 km	2. kolo	2,6 km	3. kolo	Čas	Ztráta
Mistrem České republiky pro rok 2024 se stává HORÁČEK Jan, Olfin Car Ski Team Trutnov										
1.	75	HORÁČEK Jan	2011	TRUT	4:12.9 (3)	4:29.6 (2)	8:42.6 (2)	4:26.9 (1)	<b>13:09.5</b>	
2.	71	PACHOLÍK Max	2011	STUD	4:05.5 (1)	4:35.2 (3)	8:40.7 (1)	4:32.3 (3)	<b>13:13.0</b>	3.5
3.	76	HAMÁČEK Matěj	2011	TRUT	4:16.6 (4)	4:28.0 (1)	8:44.7 (3)	4:30.2 (2)	<b>13:14.9</b>	5.4
4.	72	JANIČEK Rostislav	2011	DDMP	4:07.2 (2)	4:39.3 (4)	8:46.5 (4)	4:46.7 (9)	<b>13:33.2</b>	23.7
5.	74	ŠOULA Jakub	2011	SKST	4:22.1 (5)	4:42.2 (6)	9:04.3 (5)	4:39.8 (4)	<b>13:44.1</b>	34.6
6.	90	KOHOUTEK Adam	2011	TRUT	4:30.0 (8)	4:41.4 (5)	9:11.4 (6)	4:42.5 (5)	<b>13:54.0</b>	44.5
7.	110	SUCHODOL Kryštof	2011	SPLE	4:36.3 (13)	4:46.1 (7)	9:22.4 (8)	4:44.9 (7)	<b>14:07.4</b>	57.9
8.	73	MACEK Šimon	2011	SOSY	4:37.3 (14)	4:47.2 (8)	9:24.5 (10)	4:43.5 (6)	<b>14:08.1</b>	58.6
9.	84	MRŮZEK Šimon	2011	SPVR	4:24.5 (6)	4:48.3 (9)	9:12.9 (7)	5:08.6 (17)	<b>14:21.5</b>	1:12.0
10=	77	KOVÁŘ Antonín	2011	SKSV	4:37.5 (15)	4:49.3 (10)	9:26.9 (11)	4:56.4 (11)	<b>14:23.3</b>	1:13.8

24.2.2024

Harrachov

TJ Dukla Liberec z.s., TJ Jiskra Harrachov z.s.

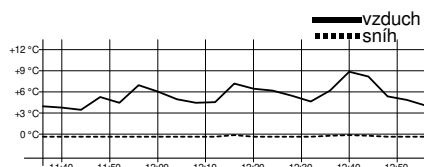
timing by sport-casomira.cz

24.2.2024 15:19

Strana 6 z 11

# Žáci starší 2011

## 4 km klasicky



### Technická data

Homologace -----  
 Okruhy 3 x 1,3 km  
 HD, MC, TC -----

Start, konec 12:04, 12:46  
 Počasí oblačno

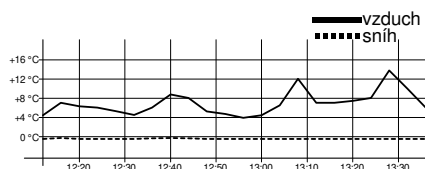
Poř.	Číslo	Jméno	Roč.	Klub	1,3 km	2. kolo	2,6 km	3. kolo	Čas	Ztráta
10=	117	SVOBODA Jiří	2011	SPLE	4:41.7 (16)	4:56.0 (13)	9:37.8 (13)	4:45.4 (8)	14:23.3	1:13.8
12.	81	PEŇÁZ Jan	2011	FEJE	4:28.4 (7)	4:55.3 (12)	9:23.7 (9)	5:00.8 (15)	14:24.5	1:15.0
13.	79	LUKEŠ Jakub	2011	SKIJ	4:33.0 (11)	4:54.6 (11)	9:27.7 (12)	5:00.5 (14)	14:28.2	1:18.7
14=	78	VOCELKA Patrik	2011	SKSV	4:50.4 (23)	4:59.4 (15)	9:49.8 (20)	4:54.4 (10)	14:44.2	1:34.7
14=	108	CHOCHOLOUŠEK Adam	2011	DULI	4:47.9 (22)	4:58.3 (14)	9:46.3 (15)	4:57.8 (12)	14:44.2	1:34.7
16.	83	KŘEPELA Jiří	2011	SKSK	4:30.5 (9)	5:07.8 (20)	9:38.3 (14)	5:07.5 (16)	14:45.9	1:36.4
17.	92	STRNAD Václav	2011	BKLM	4:44.6 (18)	5:04.1 (18)	9:48.7 (18)	4:59.4 (13)	14:48.2	1:38.7
18.	94	UMAN Jaroslav	2011	SKHA	4:46.1 (20)	5:03.6 (17)	9:49.7 (19)	5:09.3 (18)	14:59.1	1:49.6
19.	93	PELOUCH Filip	2011	JBCN	4:45.8 (19)	5:02.3 (16)	9:48.1 (17)	5:12.9 (20)	15:01.1	1:51.6
20.	85	BIDLAS Marek	2011	SKST	4:43.1 (17)	5:10.2 (21)	9:53.4 (21)	5:15.7 (22)	15:09.2	1:59.7
21.	80	HŘEBÍK Michal	2011	SKJA	4:32.5 (10)	5:15.4 (25)	9:47.9 (16)	5:23.1 (28)	15:11.1	2:01.6
22.	97	BERNÁT Vojtěch	2011	SOKN	4:53.4 (25)	5:04.2 (19)	9:57.7 (22)	5:16.6 (23)	15:14.3	2:04.8
23.	86	VOLNÝ Lukáš	2011	GZUB	4:53.4 (24)	5:11.4 (22)	10:04.8 (23)	5:11.2 (19)	15:16.0	2:06.5
24.	89	RIEDL Kryštof	2011	SKVM	4:57.6 (28)	5:13.5 (23)	10:11.1 (25)	5:17.3 (25)	15:28.5	2:19.0
25=	100	MAŠEK Jan	2011	DULI	5:00.5 (30)	5:15.2 (24)	10:15.8 (27)	5:15.1 (21)	15:30.9	2:21.4
25=	115	TOMEŠ Roman	2011	SWSL	4:46.5 (21)	5:20.6 (26)	10:07.2 (24)	5:23.6 (29)	15:30.9	2:21.4
27.	114	NEVRLÝ Jakub	2011	ROPU	4:55.6 (27)	5:21.5 (28)	10:17.1 (28)	5:16.8 (24)	15:34.0	2:24.5
28.	111	VÁCHA Jan	2011	SPLE	5:01.1 (31)	5:22.1 (29)	10:23.2 (30)	5:21.7 (26)	15:45.0	2:35.5
29.	87	VÁGNER Ota	2011	LOTE	4:33.3 (12)	5:40.9 (38)	10:14.2 (26)	5:34.4 (34)	15:48.7	2:39.2
30.	82	HORNYCH Ivan	2011	SKIP	4:54.9 (26)	5:37.8 (34)	10:32.8 (31)	5:22.9 (27)	15:55.7	2:46.2
31.	88	PORADA Kryštof	2011	SNKV	4:59.7 (29)	5:22.9 (30)	10:22.6 (29)	5:34.2 (33)	15:56.8	2:47.3
32.	91	LUKAVEC Kryštof	2011	LSKL	5:12.3 (35)	5:20.7 (27)	10:33.0 (32)	5:26.8 (30)	15:59.9	2:50.4
33.	96	LOS Antonín	2011	SKPU	5:02.5 (32)	5:31.8 (32)	10:34.3 (33)	5:33.3 (32)	16:07.7	2:58.2
34.	98	NOVOTNÝ Ondřej	2011	TRUT	5:20.9 (41)	5:30.2 (31)	10:51.1 (36)	5:32.9 (31)	16:24.0	3:14.5
35.	102	KOWOLOWSKI Viktor	2011	DLOM	5:09.3 (33)	5:36.7 (33)	10:46.0 (34)	5:38.4 (36)	16:24.4	3:14.9
36.	109	KUBIŠTA Anton	2011	BILB	5:17.0 (39)	5:40.5 (37)	10:57.5 (38)	5:35.0 (35)	16:32.6	3:23.1
37.	95	KADLUS Vojtěch	2011	LOTE	5:11.1 (34)	5:37.9 (35)	10:49.0 (35)	5:44.9 (38)	16:33.9	3:24.4
38.	99	OBDRŽÁLEK Matěj	2011	SKPU	5:13.9 (36)	5:39.3 (36)	10:53.2 (37)	5:44.7 (37)	16:38.0	3:28.5
39.	101	KUČERA Vojtěch	2011	LOTE	5:15.4 (38)	5:46.1 (39)	11:01.6 (39)	5:57.9 (42)	16:59.6	3:50.1
40.	116	PORKERT Tomáš	2011	JBCN	5:14.7 (37)	5:53.4 (42)	11:08.1 (40)	5:54.5 (40)	17:02.7	3:53.2
41.	103	MITRENGA Samuel	2011	DLOM	5:20.4 (40)	5:48.7 (40)	11:09.2 (41)	5:59.2 (43)	17:08.5	3:59.0
42.	113	KLUZ Roman	2011	SKIM	5:34.1 (42)	5:54.6 (43)	11:28.7 (42)	5:52.2 (39)	17:21.0	4:11.5
43.	107	HONZÍK Martin	2011	SCPL	5:39.9 (43)	6:01.2 (44)	11:41.1 (43)	5:56.8 (41)	17:38.0	4:28.5
44.	104	BALDRIÁN Josef	2011	ZDRP	5:52.2 (45)	5:50.7 (41)	11:43.0 (44)	6:01.8 (45)	17:44.8	4:35.3
45.	112	SEDLÁK Václav	2011	PBKL	5:49.0 (44)	6:06.1 (45)	11:55.1 (45)	6:01.6 (44)	17:56.8	4:47.3
46.	105	SUSZKA Jiří	2011	DLOM	5:53.1 (46)	6:10.8 (46)	12:04.0 (46)	6:08.2 (46)	18:12.2	5:02.7
47.	118	MARYNKA Tomáš	2011	SPVR	6:04.5 (47)	6:24.7 (47)	12:29.3 (47)	6:26.9 (47)	18:56.2	5:46.7
48.	106	MÁLEK Vojtěch	2011	TRUT	6:07.0 (48)	6:33.9 (48)	12:40.9 (48)	6:48.4 (48)	19:29.3	6:19.8

Výkonnostní třída	do času	do místa
I.	14:28.4	(13.)
II.	15:07.9	(19.)
III.	17:06.3	(40.)

Přihlášeno: 48 Startovalo: 48 Klasifikováno: 48 DNS: 0 DNF: 0 DSQ: 0

# Žáci starší 2010

## 4 km klasicky



### Technická data

Homologace	----
Okruhy	3 x 1,3 km
HD, MC, TC	----
Start, konec	12:40, 13:29
Počasí	oblačno

Poř.	Číslo	Jméno	Roč.	Klub	1,3 km	2. kolo	2,6 km	3. kolo	Čas	Ztráta
------	-------	-------	------	------	--------	---------	--------	---------	-----	--------

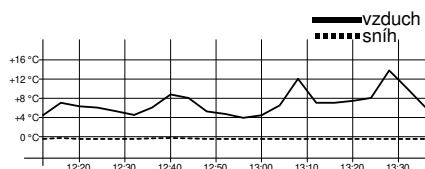
Mistrem České republiky pro rok 2024 se stává ŠTĚRBA Lukáš, LK Slovan Karlovy Vary

1.	1	ŠTĚRBA Lukáš	2010	SNKV	3:53.7 (2)	4:01.5 (1)	7:55.2 (2)	4:03.8 (1)	<b>11:59.0</b>	
2.	2	SCHÄFER Josef	2010	DULI	3:49.8 (1)	4:03.1 (2)	7:52.9 (1)	4:06.4 (2)	<b>11:59.4</b>	0.4
3.	5	KYSELA Vojtěch	2010	TRUT	3:56.3 (3)	4:07.0 (3)	8:03.4 (3)	4:16.5 (3)	<b>12:19.9</b>	20.9
4.	4	SŮRA Antonín	2010	DULI	4:04.0 (6)	4:18.7 (4)	8:22.7 (4)	4:31.6 (4)	<b>12:54.4</b>	55.4
5.	50	KUBÍN Jan	2010	TJTA	4:00.6 (4)	4:26.9 (6)	8:27.6 (6)	4:33.6 (7)	<b>13:01.2</b>	1:02.2
6.	6	VLK Ondřej	2010	SWSL	4:07.2 (7)	4:30.0 (7)	8:37.2 (7)	4:32.1 (5)	<b>13:09.3</b>	1:10.3
7.	3	DRDA Filip	2010	SKJA	4:01.1 (5)	4:21.9 (5)	8:23.0 (5)	4:47.8 (15)	<b>13:10.9</b>	1:11.9
8.	54	DUŠEK Ondřej	2010	SPLE	4:16.6 (12)	4:30.4 (8)	8:47.0 (8)	4:32.2 (6)	<b>13:19.2</b>	1:20.2
9.	42	BERAN Matěj František	2010	SKIP	4:13.1 (9)	4:37.6 (10)	8:50.7 (9)	4:37.3 (9)	<b>13:28.0</b>	1:29.0
10.	12	DOLEŽAL Mojmir	2010	TJTA	4:24.3 (17)	4:33.4 (9)	8:57.7 (12)	4:34.7 (8)	<b>13:32.5</b>	1:33.5
11.	13	ZELENKA Matěj	2010	TRUT	4:07.4 (8)	4:48.3 (22)	8:55.8 (10)	4:44.7 (13)	<b>13:40.6</b>	1:41.6
12.	9	PAVELKA Viktor	2010	FEJE	4:23.1 (15)	4:39.6 (11)	9:02.7 (14)	4:39.6 (10)	<b>13:42.3</b>	1:43.3
13.	11	TANDLER Jáchym	2010	DULI	4:18.6 (13)	4:40.5 (13)	8:59.1 (13)	4:44.5 (12)	<b>13:43.7</b>	1:44.7
14.	53	HALABRIN Roman	2010	DLOM	4:14.3 (10)	4:49.2 (24)	9:03.6 (15)	4:48.6 (17)	<b>13:52.2</b>	1:53.2
15.	8	VANĚČEK Michal	2010	SKHA	4:14.9 (11)	4:41.1 (14)	8:56.0 (11)	4:56.5 (24)	<b>13:52.6</b>	1:53.6
16.	43	GLEN Mateusz	2010	POL	4:23.6 (16)	4:43.7 (16)	9:07.4 (16)	4:50.0 (19)	<b>13:57.4</b>	1:58.4
17.	27	KUTLVAŠR Vladimír	2010	SPVR	4:28.0 (22)	4:43.0 (15)	9:11.1 (20)	4:48.8 (18)	<b>13:59.9</b>	2:00.9
18.	17	HOFFMANN Šimon	2010	SGJB	4:27.8 (21)	4:39.9 (12)	9:07.7 (17)	4:53.1 (22)	<b>14:00.8</b>	2:01.8
19.	19	HADAČ Jakub	2010	SKIJ	4:26.9 (19)	4:47.5 (20)	9:14.4 (22)	4:47.3 (14)	<b>14:01.8</b>	2:02.8
20.	18	KALOVSKÝ Vladimír	2010	SKBR	4:28.9 (23)	4:47.6 (21)	9:16.6 (23)	4:47.8 (16)	<b>14:04.5</b>	2:05.5
21.	16	IGLER Jan	2010	SKSV	4:19.3 (14)	4:48.8 (23)	9:08.1 (18)	4:57.3 (25)	<b>14:05.5</b>	2:06.5
22.	20	MAREČEK Mikuláš	2010	SKIJ	4:26.9 (20)	4:47.2 (19)	9:14.2 (21)	4:52.0 (20)	<b>14:06.2</b>	2:07.2
23.	23	KANĚK Václav	2010	SKBR	4:33.2 (25)	4:44.9 (17)	9:18.1 (24)	4:53.1 (21)	<b>14:11.3</b>	2:12.3
24.	10	ČEJKA Hynek	2010	DULI	4:24.3 (18)	4:45.4 (18)	9:09.8 (19)	5:07.2 (29)	<b>14:17.0</b>	2:18.0
25.	51	VESELÝ Jan	2010	SPLE	4:47.0 (34)	4:52.3 (25)	9:39.4 (29)	4:40.9 (11)	<b>14:20.3</b>	2:21.3
26.	29	ANDRESÍK Matyáš	2010	SNKV	4:38.3 (29)	4:58.3 (27)	9:36.7 (26)	5:00.3 (26)	<b>14:37.1</b>	2:38.1
27.	7	ŤUPA Adam	2010	NMNM	4:37.0 (28)	5:01.2 (29)	9:38.3 (28)	5:01.2 (27)	<b>14:39.5</b>	2:40.5
28.	14	MOTL Václav	2010	SOSK	4:36.2 (26)	5:01.6 (30)	9:37.8 (27)	5:04.5 (28)	<b>14:42.3</b>	2:43.3
29.	15	HALATA Šebestián	2010	SKVM	4:31.3 (24)	4:57.8 (26)	9:29.2 (25)	5:13.8 (37)	<b>14:43.1</b>	2:44.1
30.	25	ŠNYTR Antonín	2010	SKJA	4:41.9 (30)	4:58.6 (28)	9:40.6 (30)	5:07.4 (30)	<b>14:48.0</b>	2:49.0
31.	36	HONCŮ Matěj	2010	SWSL	4:43.1 (31)	5:05.3 (33)	9:48.5 (32)	5:08.5 (33)	<b>14:57.0</b>	2:58.0
32.	24	ŽÁK Ondřej	2010	FEJE	4:46.1 (33)	5:03.0 (31)	9:49.2 (33)	5:08.7 (34)	<b>14:57.9</b>	2:58.9
33.	49	VESELÝ Jakub	2010	SPLE	5:01.4 (40)	5:04.9 (32)	10:06.3 (37)	4:55.3 (23)	<b>15:01.7</b>	3:02.7
34.	22	SKRBK Matouš	2010	SKJA	4:37.0 (27)	5:06.6 (34)	9:43.6 (31)	5:21.6 (39)	<b>15:05.3</b>	3:06.3
35.	56	POBOŘIL Adam	2010	ROPU	4:45.7 (32)	5:11.9 (36)	9:57.7 (34)	5:08.5 (31)	<b>15:06.2</b>	3:07.2
36.	30	DUCHÁČ Patrik	2010	BKLM	4:50.6 (36)	5:11.4 (35)	10:02.0 (35)	5:09.2 (35)	<b>15:11.2</b>	3:12.2
37.	44	ŠTEFAN Alois	2010	PBKL	4:48.0 (35)	5:16.9 (39)	10:04.9 (36)	5:19.0 (38)	<b>15:24.0</b>	3:25.0
38.	46	MAREŠ Jaroslav	2010	SKIP	5:07.7 (44)	5:16.1 (37)	10:23.8 (40)	5:08.5 (32)	<b>15:32.4</b>	3:33.4
39.	28	RŮCKER Vítek	2010	BKLM	4:52.1 (37)	5:16.2 (38)	10:08.4 (38)	5:27.9 (40)	<b>15:36.3</b>	3:37.3
40.	41	STEVENSON Luke Joshu	2010	JBCN	4:53.3 (38)	5:22.5 (40)	10:15.9 (39)	5:28.3 (41)	<b>15:44.2</b>	3:45.2
41.	38	SOUČEK Vojtěch	2010	JBCN	5:08.8 (45)	5:25.6 (41)	10:34.4 (43)	5:13.0 (36)	<b>15:47.4</b>	3:48.4
42.	34	PINDUR Viktor	2010	DLOM	4:53.6 (39)	5:34.6 (45)	10:28.3 (41)	5:46.7 (48)	<b>16:15.1</b>	4:16.1
43.	35	MAZAČ Mikuláš	2010	SWSL	5:02.7 (43)	5:28.5 (42)	10:31.2 (42)	5:44.5 (47)	<b>16:15.8</b>	4:16.8
44.	52	MASOPUST Jiří	2010	KBHA	5:01.5 (41)	5:41.4 (49)	10:43.0 (44)	5:33.6 (42)	<b>16:16.7</b>	4:17.7



# Žáci starší 2010

## 4 km klasicky



### Technická data

Homologace	----
Okruhy	3 x 1,3 km
HD, MC, TC	----
Start, konec	12:40, 13:29
Počasí	oblačno

Poř.	Číslo	Jméno	Roč.	Klub	1,3 km	2. kolo	2,6 km	3. kolo	Čas	Ztráta
45.	31	SEIDL Matyas	2010	SOSY	5:11.6 (47)	5:32.3 (44)	10:43.9 (45)	5:35.2 (43)	<b>16:19.2</b>	4:20.2
46.	33	KŘÍŽ Jakub	2010	NMNM	5:12.6 (48)	5:31.8 (43)	10:44.4 (46)	5:40.6 (44)	<b>16:25.1</b>	4:26.1
47.	32	HORČÍK Štěpán	2010	SKPU	5:13.6 (50)	5:39.2 (46)	10:52.9 (47)	5:43.2 (46)	<b>16:36.2</b>	4:37.2
48.	47	ČAPEK Matěj	2010	LOTE	5:12.9 (49)	5:40.8 (48)	10:53.8 (48)	5:52.2 (50)	<b>16:46.1</b>	4:47.1
49.	55	BŘEČKA František	2010	SOSY	5:28.9 (53)	5:40.4 (47)	11:09.4 (52)	5:43.2 (45)	<b>16:52.6</b>	4:53.6
50.	57	MIKETA Daniel	2010	DLOM	5:10.0 (46)	5:47.9 (51)	10:57.9 (50)	5:58.3 (52)	<b>16:56.3</b>	4:57.3
51.	39	DIVÍN Petr	2010	GZUB	5:20.5 (51)	5:46.0 (50)	11:06.5 (51)	5:50.2 (49)	<b>16:56.8</b>	4:57.8
52.	26	SUCHÝ Adam	2010	NMNM	5:01.6 (42)	5:54.2 (53)	10:55.8 (49)	6:06.8 (53)	<b>17:02.7</b>	5:03.7
53.	40	MAŇHAL Petr	2010	TRUT	5:21.4 (52)	5:50.5 (52)	11:11.9 (53)	5:55.2 (51)	<b>17:07.2</b>	5:08.2
54.	37	VOLMUT Marek	2010	SOSY	5:48.2 (54)	6:13.9 (54)	12:02.2 (54)	6:08.1 (54)	<b>18:10.3</b>	6:11.3
55.	48	SMRŽ Zdeněk	2010	SKPU	6:04.4 (55)	6:31.5 (55)	12:36.0 (55)	6:21.7 (55)	<b>18:57.7</b>	6:58.7
56.	58	DURDIL Daniel	2010	SNKV	6:21.7 (56)	7:09.5 (56)	13:31.2 (56)	6:48.3 (56)	<b>20:19.6</b>	8:20.6
DNS	21	SAVRUK Lukáš	2010	SWSL					nestartoval(a)	
DNS	45	ČERNÍK Marek	2010	SKSK					nestartoval(a)	

Výkonnostní třída do času do místa

I.	13:10.9	(7.)
II.	13:46.8	(13.)
III.	15:34.7	(38.)

Přihlášeno: 58

Startovalo: 56

Klasifikováno: 56

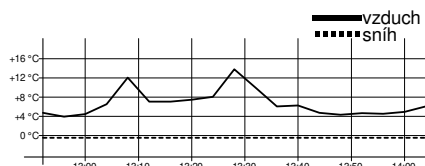
DNS: 2

DNF: 0

DSQ: 0

# Žáci starší 2009 U15

## 5 km klasicky



### Technická data

Homologace	----
Okruhy	4 x 1,3 km
HD, MC, TC	----
Start, konec	13:20, 14:10
Počasí	oblačno

Poř.	Číslo	Jméno	Roč.	Klub	1,3 km	2,6 km	3,9 km	Čas	Ztráta
------	-------	-------	------	------	--------	--------	--------	-----	--------

Mistrem České republiky pro rok 2024 se stává JELÍNEK Antonín, Klub biatlonu Trefa Mladá Boleslav

1.	114	JELÍNEK Antonín	2009	KBTR	3:42.7 (1)	7:38.6 (1)	11:43.8 (1)	<b>15:48.2</b>	
2.	64	JANATA Jan	2009	JBCN	3:49.3 (3)	7:56.2 (4)	12:04.6 (3)	<b>16:09.0</b>	20.8
3.	61	BEDNÁŘ William Tobiáš	2009	TRUT	3:44.3 (2)	7:45.2 (2)	11:55.8 (2)	<b>16:11.7</b>	23.5
4.	63	GAJDOŠ Matěj	2009	FEJE	3:50.7 (4)	7:54.0 (3)	12:12.4 (4)	<b>16:25.0</b>	36.8
5.	62	CHURAVÝ František	2009	DULI	3:52.8 (5)	7:59.5 (5)	12:15.1 (5)	<b>16:30.6</b>	42.4
6.	67	KYRÁL Šimon	2009	SOSY	3:56.7 (10)	8:08.8 (7)	12:23.8 (6)	<b>16:38.5</b>	50.3
7.	75	HROUDA Adam	2009	DULI	3:55.7 (9)	8:12.1 (8)	12:33.3 (8)	<b>16:56.3</b>	1:08.1
8.	66	SIMBARTL Richard	2009	SKIJ	3:55.4 (7)	8:18.6 (9)	12:43.0 (10)	<b>17:05.6</b>	1:17.4
9.	104	JON Josef	2009	SPVR	4:02.7 (15)	8:19.4 (10)	12:41.6 (9)	<b>17:06.5</b>	1:18.3
10.	80	HOLUB Tobiáš	2009	JBCN	3:55.1 (6)	8:04.7 (6)	12:30.6 (7)	<b>17:12.6</b>	1:24.4
11.	72	ZUB Vojtěch	2009	SKSV	4:01.0 (12)	8:22.9 (12)	12:53.2 (12)	<b>17:13.8</b>	1:25.6
12.	107	HANČ Jakub	2009	SKHA	4:02.6 (14)	8:21.5 (11)	12:50.9 (11)	<b>17:21.3</b>	1:33.1
13.	71	TELECKÝ Vojtěch	2009	SKBR	4:04.3 (16)	8:27.4 (13)	12:56.4 (13)	<b>17:27.5</b>	1:39.3
14.	116	CIPRA Antonín	2009	KBTR	4:09.2 (18)	8:38.4 (17)	13:06.1 (14)	<b>17:29.2</b>	1:41.0

24.2.2024

Harrachov

TJ Dukla Liberec z.s., TJ Jiskra Harrachov z.s.

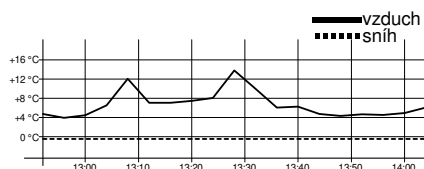
timing by sport-casomira.cz

24.2.2024 15:19

Strana 9 z 11

# Žáci starší 2009 U15

## 5 km klasicky



### Technická data

Homologace -----  
 Okruhy 4 x 1,3 km  
 HD, MC, TC -----

Start, konec 13:20, 14:10  
 Počasí oblačno

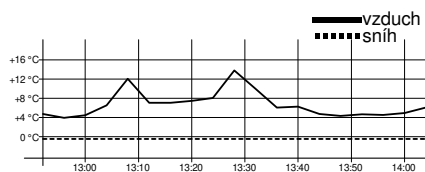
Poř.	Číslo	Jméno	Reř.č.	Klub	1,3 km	2,6 km	3,9 km	Čas	Ztráta
15.	83	HAVRÁNEK Adam	2009	DULI	4:17.9 (32)	8:42.3 (20)	13:11.8 (16)	<b>17:41.5</b>	1:53.3
16.	69	MICHÁLEK Antonín	2009	SKSV	4:10.4 (20)	8:37.1 (15)	13:11.4 (15)	<b>17:45.4</b>	1:57.2
17.	65	ŠÍMA Jakub	2009	SKST	4:06.8 (17)	8:39.9 (18)	13:14.8 (17)	<b>17:51.2</b>	2:03.0
18.	74	ŠABATA František	2009	SKSK	4:14.7 (27)	8:42.4 (21)	13:16.7 (18)	<b>17:57.3</b>	2:09.1
19.	110	DOUBRAVA Vojtěch	2009	DULI	4:17.1 (30)	8:45.8 (23)	13:20.8 (19)	<b>18:00.4</b>	2:12.2
20.	79	LISKOVSÝ Václav	2009	SKIP	4:10.0 (19)	8:38.4 (16)	13:22.3 (21)	<b>18:02.8</b>	2:14.6
21.	68	HAVLÍK Matyáš	2009	NMNM	3:55.5 (8)	8:39.9 (19)	13:27.2 (22)	<b>18:07.2</b>	2:19.0
22.	76	SLAVÍK Jakub	2009	DULI	4:17.2 (31)	8:53.0 (27)	13:30.7 (25)	<b>18:08.1</b>	2:19.9
23.	73	KOŽÁK Vojtěch	2009	SCPL	4:02.2 (13)	8:32.1 (14)	13:21.2 (20)	<b>18:10.3</b>	2:22.1
24.	115	STEJSKAL Daniel	2009	SPLE	4:20.3 (36)	8:53.6 (29)	13:32.9 (26)	<b>18:11.4</b>	2:23.2
25.	77	JOHAN Marek	2009	TRUT	4:17.0 (29)	8:47.9 (24)	13:29.8 (24)	<b>18:11.7</b>	2:23.5
26.	113	KRISTEJN Jiří	2009	SOKL	4:11.5 (21)	8:48.3 (25)	13:29.5 (23)	<b>18:17.7</b>	2:29.5
27.	101	HORNYCH Oldřich	2009	SKIP	4:14.5 (26)	8:54.8 (30)	13:37.0 (27)	<b>18:21.5</b>	2:33.3
28.	87	KAREL Filip	2009	SKIJ	4:14.2 (25)	8:50.8 (26)	13:40.4 (29)	<b>18:25.6</b>	2:37.4
29.	70	ŠMEJKAL Štěpán	2009	SNKV	4:12.6 (22)	8:55.0 (31)	13:39.4 (28)	<b>18:28.9</b>	2:40.7
30.	88	NOVOTNÝ Jan	2009	TRUT	4:19.7 (35)	8:56.4 (32)	13:46.2 (31)	<b>18:37.6</b>	2:49.4
31.	95	ENDLER Matěj	2009	SWSL	4:33.9 (48)	9:09.1 (37)	13:54.0 (35)	<b>18:39.8</b>	2:51.6
32=	85	CHALOUPKA Kryštof	2009	SKBR	4:22.0 (39)	9:02.2 (34)	13:53.4 (34)	<b>18:42.4</b>	2:54.2
32=	86	SÝKORA Tadeáš	2009	SCPL	4:20.5 (37)	8:57.6 (33)	13:49.2 (33)	<b>18:42.4</b>	2:54.2
34.	94	SKÁCEL Jan	2009	DULI	4:32.6 (47)	9:09.2 (38)	13:54.1 (36)	<b>18:42.5</b>	2:54.3
35.	89	KUČERA Jakub	2009	ZDRP	4:26.9 (41)	9:09.5 (39)	13:55.4 (37)	<b>18:42.9</b>	2:54.7
36.	78	MATOULEK Tomáš	2009	TRUT	4:13.2 (24)	8:53.4 (28)	13:46.8 (32)	<b>18:46.1</b>	2:57.9
37.	105	RÜCK Vilém	2009	KBHA	3:59.5 (11)	8:45.1 (22)	13:42.3 (30)	<b>18:47.3</b>	2:59.1
38.	81	VALOUŠEK Mikoláš	2009	DULI	4:12.8 (23)	9:06.8 (36)	14:09.3 (40)	<b>19:01.7</b>	3:13.5
39.	100	HRŮŠA Ondřej	2009	SKIP	4:28.8 (42)	9:16.4 (44)	14:10.4 (41)	<b>19:05.6</b>	3:17.4
40.	109	ŠKORPIL Marek	2009	ZDRP	4:31.1 (44)	9:21.6 (45)	14:14.8 (43)	<b>19:06.1</b>	3:17.9
41.	91	STUHLÍK Jakub	2009	SKIP	4:20.6 (38)	9:05.8 (35)	14:09.0 (39)	<b>19:06.5</b>	3:18.3
42.	92	ŠTRYNCL Adam	2009	SWSL	4:18.0 (33)	9:11.5 (40)	14:15.2 (44)	<b>19:12.0</b>	3:23.8
43.	112	ZÁHOREC Jonáš	2009	FEJE	4:16.7 (28)	9:13.2 (42)	14:13.5 (42)	<b>19:12.5</b>	3:24.3
44.	84	HOLUBEC Václav	2009	HSKB	4:19.1 (34)	9:13.0 (41)	14:09.0 (38)	<b>19:16.4</b>	3:28.2
45.	82	MITTERWALD Petr	2009	SKIP	4:22.1 (40)	9:13.3 (43)	14:28.5 (45)	<b>19:23.8</b>	3:35.6
46.	103	JELÍNEK Ondřej	2009	DULI	4:31.8 (46)	9:33.5 (48)	14:38.6 (46)	<b>19:44.2</b>	3:56.0
47.	99	ŠERCL Ondřej	2009	JBCN	4:37.8 (50)	9:30.0 (46)	14:39.6 (47)	<b>19:51.5</b>	4:03.3
48.	90	FEJFUŠA Matěj	2009	SKPU	4:31.7 (45)	9:31.9 (47)	14:47.7 (48)	<b>20:09.6</b>	4:21.4
49.	102	MELICH Kryštof	2009	TJTA	4:47.8 (52)	9:56.0 (52)	15:11.1 (49)	<b>20:17.5</b>	4:29.3
50.	97	ČAPEK Bartoloměj	2009	SKJA	4:48.3 (53)	9:55.7 (51)	15:12.2 (51)	<b>20:23.1</b>	4:34.9
51.	108	JARUŠEK Sáva	2009	JBCN	4:46.0 (51)	9:54.7 (50)	15:11.2 (50)	<b>20:27.5</b>	4:39.3
52.	93	BERNT Bartoloměj	2009	SOSK	4:36.9 (49)	9:56.7 (53)	15:22.5 (53)	<b>20:46.5</b>	4:58.3
53.	96	KOLLÁR Lubor	2009	SNKV	4:30.6 (43)	9:42.3 (49)	15:19.6 (52)	<b>21:01.1</b>	5:12.9
54.	106	TROUTNAR Václav	2009	SKIP	4:49.8 (54)	10:11.3 (54)	15:40.4 (54)	<b>21:10.6</b>	5:22.4
55.	117	GAJDA Petr	2009	ZDRP	5:36.9 (56)	11:08.2 (56)	16:33.8 (56)	<b>21:55.5</b>	6:07.3
56.	98	FERENČÁK Mikuláš	2009	SKBR	5:02.1 (55)	10:32.1 (55)	16:26.0 (55)	<b>22:01.1</b>	6:12.9
57.	111	UDATNÝ Tomáš	2009	SOSK	5:38.8 (57)	11:52.1 (57)	18:17.2 (57)	<b>24:28.3</b>	8:40.1

Výkonnostní třída do času do místa

I.	17:23.0	(12.)
II.	18:10.4	(23.)
III.	20:32.6	(51.)

# Žáci starší 2009 U15

## 5 km klasicky



### Technická data

Homologace	----
Okruhy	4 x 1,3 km
HD, MC, TC	----
Start, konec	13:20, 14:10
Počasí	oblačno

Poř.	Číslo	Jméno	Reĝoč.	Klub	1,3 km	2,6 km	3,9 km	Čas	Ztráta
Přihlášeno: 57		Startovalo: 57		Klasifikováno: 57		DNS: 0	DNF: 0	DSQ: 0	

Technický delegát  
Tomáš Korbelař

Sekretář závodu  
Zora Honzlová



**CZECH SKI & SNOWBOARD** SINCE 1903



AutoPalace®

**MONZAS**

**gopass**



## Mistrovství České republiky staršího žactva v běhu na lyžích s mezinárodní účastí

## Výsledková listina

### Soutěžní výbor

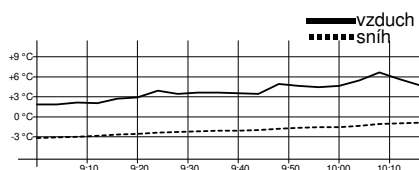
Technický delegát:	Tomáš Korbelař
Asistent T.D.	Markéta Augustiňáková
Ředitel závodu	Arnošt Hlaváček
Zástupce STK	Iveta Roubíčková

### Technická data

Start závodu	9:30
Konec závodu	13:28

## Žákyně starší 2011

### 3 km volně



### Technická data

Homologace	----
Okruhy	2 x 1,3 km
HD, MC, TC	----
Start, konec	9:30, 10:06
Počasí	oblačno

Poř.	Číslo	Jméno	Reg.	Roč.	Klub	1,3 km	2. kolo	Čas	Ztráta
------	-------	-------	------	------	------	--------	---------	-----	--------

Mistrem České republiky pro rok 2024 se stává **KORNFELDOVÁ Amálie**, Olfin Car Ski Team Trutnov

1.	11	<b>KORNFELDOVÁ Amálie</b>	2011	TRUT	3:19.6 (1)	3:40.1 (4)	<b>6:59.8</b>	
2.	4	<b>RANDÁKOVÁ Jana</b>	2011	SOSY	3:28.2 (2)	3:32.9 (2)	<b>7:01.2</b>	1.4
3.	5	<b>DOSEĎELOVÁ Eva</b>	2011	SOSY	3:29.6 (3)	3:32.9 (1)	<b>7:02.6</b>	2.8
4.	6	<b>RŮCKOVÁ Eva</b>	2011	KBHA	3:29.9 (4)	3:39.1 (3)	<b>7:09.0</b>	9.2
5=	1	<b>HARTMANOVÁ Eliška</b>	2011	SPLE	3:31.3 (5)	3:44.8 (6)	<b>7:16.1</b>	16.3
5=	10	<b>HLISNÍKOVÁ Anna Marie</b>	2011	LOTE	3:31.8 (6)	3:44.3 (5)	<b>7:16.1</b>	16.3
7.	13	<b>FEJFAROVÁ Sofie</b>	2011	JBCN	3:40.1 (8)	3:49.2 (10)	<b>7:29.4</b>	29.6
8.	2	<b>ZUZÁNKOVÁ Anna</b>	2011	SPVR	3:41.9 (11)	3:47.8 (9)	<b>7:29.7</b>	29.9
9=	3	<b>ŠIMOVÁ Viktorie</b>	2011	SKST	3:44.0 (14)	3:47.0 (7)	<b>7:31.0</b>	31.2
9=	14	<b>KAJÍNKOVÁ Ina</b>	2011	DULI	3:41.0 (9)	3:49.9 (12)	<b>7:31.0</b>	31.2
11.	22	<b>KUKLÍKOVÁ Sofie</b>	2011	SKIJ	3:41.1 (10)	3:50.4 (13)	<b>7:31.5</b>	31.7
12.	28	<b>NDUWIMANA Ania</b>	2011	SNKV	3:42.1 (12)	3:53.0 (14)	<b>7:35.1</b>	35.3
13.	15	<b>JUNGOVÁ Karolína</b>	2011	SOSY	3:50.4 (21)	3:47.5 (8)	<b>7:37.9</b>	38.1
14.	8	<b>HOLUBOVÁ Anika</b>	2011	SKJA	3:42.2 (13)	3:56.3 (16)	<b>7:38.5</b>	38.7
15.	12	<b>JEDLIČKOVÁ Tereza</b>	2011	SKSV	3:35.5 (7)	4:03.6 (24)	<b>7:39.1</b>	39.3
16.	27	<b>ČERNÁ Patricie</b>	2011	NMNM	3:46.0 (16)	3:57.0 (17)	<b>7:43.0</b>	43.2
17.	18	<b>ÖNER Eda</b>	2011	ZDRP	3:54.2 (26)	3:49.9 (11)	<b>7:44.1</b>	44.3
18.	7	<b>BERANOVÁ Barbora</b>	2011	SPVR	3:50.4 (22)	3:55.4 (15)	<b>7:45.9</b>	46.1
19.	17	<b>DUBCOVÁ Marie</b>	2011	JBCN	3:48.0 (17)	4:03.5 (23)	<b>7:51.5</b>	51.7
20.	23	<b>MAYOVÁ Veronika</b>	2011	DULI	3:50.8 (23)	4:02.2 (20)	<b>7:53.0</b>	53.2
21.	36	<b>KOUTNÁ Klára</b>	2011	NMNM	3:49.9 (20)	4:03.1 (22)	<b>7:53.1</b>	53.3
22.	25	<b>MOHVALDOVÁ Anežka</b>	2011	HSKB	3:49.0 (18)	4:04.6 (26)	<b>7:53.6</b>	53.8
23.	24	<b>KNILLOVÁ Anna</b>	2011	SKIP	3:49.6 (19)	4:04.2 (25)	<b>7:53.8</b>	54.0
24.	20	<b>KOROTVIČKOVÁ Ela</b>	2011	STUD	3:44.5 (15)	4:14.0 (34)	<b>7:58.5</b>	58.7
25.	21	<b>KABRIELOVÁ Marie</b>	2011	DULI	4:00.2 (28)	3:58.4 (18)	<b>7:58.7</b>	58.9
26.	16	<b>KUBÁTOVÁ Pavla</b>	2011	STUD	3:52.6 (24)	4:06.3 (28)	<b>7:59.0</b>	59.2

25.2.2024

Harrachov

TJ Dukla Liberec z.s., TJ Jiskra Harrachov z.s.

25.2.2024 13:29

timing by sport-casomira.cz

Strana 1 z 11

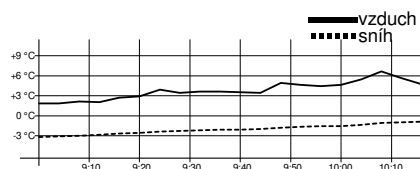


Partneři  
závodu:



# Žákyně starší 2011

## 3 km volně



### Technická data

Homologace	----
Okruhy	2 x 1,3 km
HD, MC, TC	----
Start, konec	9:30, 10:06
Počasí	oblačno

Poř.	Číslo	Jméno	Reg.	Roč.	Klub	1,3 km	2. kolo	Čas	Ztráta
27.	40	FRYBLÍKOVÁ Anna		2011	RDRY	4:00.3 (29)	3:59.7 (19)	8:00.0	1:00.2
28.	56	HOLUBCOVÁ Tereza		2011	SKIJ	4:00.8 (31)	4:05.0 (27)	8:05.9	1:06.1
29.	32	SOUKUPOVÁ Šárka		2011	LKAS	3:53.6 (25)	4:14.1 (35)	8:07.8	1:08.0
30.	29	CHALOUPKOVÁ Renata		2011	SKBR	4:02.1 (32)	4:07.3 (29)	8:09.4	1:09.6
31.	38	MATEROVÁ Lenka		2011	SKIJ	4:00.1 (27)	4:11.1 (30)	8:11.2	1:11.4
32.	26	HANČOVÁ Adéla		2011	SKHA	4:00.6 (30)	4:13.7 (33)	8:14.4	1:14.6
33.	57	TÝFOVÁ Ella		2011	BILB	4:09.6 (35)	4:12.3 (32)	8:21.9	1:22.1
34.	19	GAISLEROVÁ Sára		2011	LOTE	4:13.3 (38)	4:11.1 (31)	8:24.5	1:24.7
35.	44	SMOLOVÁ Natálie		2011	SKSV	4:14.0 (40)	4:19.2 (36)	8:33.2	1:33.4
36.	50	MELICHOVÁ Beáta		2011	TJTA	4:10.6 (36)	4:22.7 (37)	8:33.4	1:33.6
37.	45	NOVOTNÁ Dominika		2011	SPVR	4:06.0 (33)	4:27.8 (41)	8:33.8	1:34.0
38.	33	JUŘÁTKOVÁ Eleni		2011	FEJE	4:09.0 (34)	4:25.6 (40)	8:34.7	1:34.9
39.	35	HOLČÁKOVÁ Alžběta		2011	SOKN	4:11.4 (37)	4:23.9 (39)	8:35.3	1:35.5
40.	31	KORITÝÁKOVÁ Izabela		2011	FEJE	4:17.1 (42)	4:23.8 (38)	8:41.0	1:41.2
41.	46	REGNEROVÁ Karolína		2011	BILB	4:13.7 (39)	4:32.5 (43)	8:46.3	1:46.5
42.	34	VÍTKOVÁ Patricie		2011	ZDAS	4:46.3 (55)	4:02.3 (21)	8:48.7	1:48.9
43.	39	MANN Sofia		2011	SKSK	4:21.5 (47)	4:28.1 (42)	8:49.6	1:49.8
44.	47	LHOTÁKOVÁ Kristýna		2011	SOSK	4:16.4 (41)	4:36.9 (49)	8:53.4	1:53.6
45.	30	DVOŘÁKOVÁ Nikol		2011	SNKV	4:18.1 (43)	4:38.6 (51)	8:56.8	1:57.0
46.	43	HONZÍKOVÁ Petra		2011	SCPL	4:19.1 (44)	4:37.8 (50)	8:57.0	1:57.2
47.	55	TURKOVÁ Klára		2011	SNKV	4:25.0 (48)	4:32.8 (44)	8:57.8	1:58.0
48.	48	TŮMOVÁ Magdalena		2011	SKIP	4:26.2 (49)	4:33.7 (46)	8:59.9	2:00.1
49.	49	HASSANIYEH Iza		2011	POL	4:19.6 (46)	4:44.3 (52)	9:03.9	2:04.1
50.	53	ROUŠAVÁ Michaela		2011	SKSK	4:28.5 (50)	4:36.4 (48)	9:04.9	2:05.1
51.	37	LEŠTÍNSKÁ Ema		2011	SKSK	4:19.6 (45)	4:46.9 (53)	9:06.5	2:06.7
52.	51	SLEZÁKOVÁ Kristýna		2011	SWSL	4:33.3 (51)	4:35.6 (47)	9:08.9	2:09.1
53.	42	KOSTKOVÁ Eliška		2011	DULI	4:43.1 (54)	4:32.8 (45)	9:15.9	2:16.1
54.	52	KOZDEROVÁ Justýna		2011	PBKL	4:33.6 (52)	4:53.9 (55)	9:27.5	2:27.7
55.	54	ČERMÁKOVÁ Gabriela		2011	SKSV	4:37.1 (53)	4:52.3 (54)	9:29.4	2:29.6
DNF	9	MAREČKOVÁ Emma		2011	SKVM			vzdal(a)	
DNS	41	PŠENKOVÁ Tereza		2011	KBTR			nestartoval(a)	

Výkonnostní třída do času do místa

I.	7:41.7	(15.)
II.	8:02.7	(27.)
III.	9:05.7	(50.)

Přihlášeno: 57

Startovalo: 56

Klasifikováno: 55

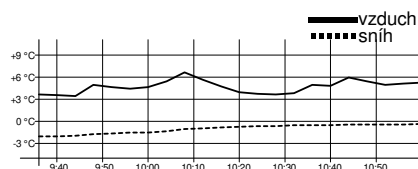
DNS: 1

DNF: 1

DSQ: 0

# Žákyně starší 2010

## 3 km volně



### Technická data

Homologace	----
Okruhy	2 x 1,3 km
HD, MC, TC	----
Start, konec	10:03, 10:52
Počasí	oblačno

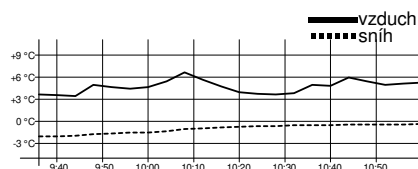
Poř.	Číslo	Jméno	Reg.	Roč.	Klub	1,3 km	2. kolo	Čas	Ztráta
------	-------	-------	------	------	------	--------	---------	-----	--------

Mistrem České republiky pro rok 2024 se stává **MÁLKOVÁ Lucie**, TJ Spartak Letohrad

1.	78	<b>MÁLKOVÁ Lucie</b>		2010	SPLE	3:13.8 (2)	3:19.3 (1)	<b>6:33.2</b>	
2.	66	<b>MACHOVÁ Jana</b>		2010	JBCN	3:21.8 (6)	3:23.3 (2)	<b>6:45.2</b>	12.0
3.	82	<b>PŮBALOVÁ Silvie</b>		2010	SKST	3:16.4 (3)	3:29.3 (8)	<b>6:45.7</b>	12.5
4.	79	<b>MASNICOVÁ Anna</b>		2010	DULI	3:09.2 (1)	3:36.6 (12)	<b>6:45.8</b>	12.6
5.	76	<b>CIPRYSOVÁ Magdaléna Lucie</b>		2010	SNKV	3:20.3 (4)	3:28.5 (6)	<b>6:48.9</b>	15.7
6.	63	<b>HAVLÍČKOVÁ Rozálie</b>		2010	SPVR	3:24.3 (8)	3:25.3 (3)	<b>6:49.7</b>	16.5
7=	62	<b>HLADKÁ Anna</b>		2010	SPVR	3:21.3 (5)	3:28.7 (7)	<b>6:50.1</b>	16.9
7=	64	<b>MARŠOUNOVÁ Anna</b>		2010	KBTR	3:24.4 (9)	3:25.7 (4)	<b>6:50.1</b>	16.9
9.	67	<b>ERBENOVÁ Marianna</b>		2010	JBCN	3:23.8 (7)	3:27.3 (5)	<b>6:51.2</b>	18.0
10.	74	<b>BUĐÁRKOVÁ Laura</b>		2010	STUD	3:30.6 (14)	3:29.6 (9)	<b>7:00.2</b>	27.0
11.	61	<b>NOVÁKOVÁ Rozálie</b>		2010	JBCN	3:29.1 (12)	3:34.9 (10)	<b>7:04.1</b>	30.9
12.	69	<b>JAKEŠOVÁ Lucie</b>		2010	SPLE	3:30.9 (15)	3:36.3 (11)	<b>7:07.2</b>	34.0
13.	80	<b>FIŠNAROVÁ Hana</b>		2010	SPVR	3:30.3 (13)	3:37.8 (13)	<b>7:08.2</b>	35.0
14.	65	<b>KOZÁROVÁ Veronika</b>		2010	NMNM	3:33.6 (17)	3:38.8 (14)	<b>7:12.5</b>	39.3
15.	68	<b>HÁKOVÁ Barbora</b>		2010	STUD	3:34.7 (18)	3:40.4 (15)	<b>7:15.2</b>	42.0
16.	73	<b>HAKLOVÁ Antonie</b>		2010	SKIJ	3:26.7 (10)	3:51.6 (21)	<b>7:18.3</b>	45.1
17.	71	<b>MADEROVÁ Pavla</b>		2010	SKIJ	3:32.7 (16)	3:45.7 (16)	<b>7:18.4</b>	45.2
18.	70	<b>KURÁŇOVÁ Eliška</b>		2010	GZUB	3:29.0 (11)	3:56.2 (27)	<b>7:25.2</b>	52.0
19.	77	<b>HROMÁDKOVÁ Elen</b>		2010	TRUT	3:43.8 (30)	3:47.0 (19)	<b>7:30.8</b>	57.6
20.	75	<b>HRNČÍŘOVÁ Denisa</b>		2010	BKLM	3:44.4 (32)	3:46.8 (17)	<b>7:31.2</b>	58.0
21.	72	<b>NEBUSOVÁ Alžběta</b>		2010	DULI	3:39.7 (22)	3:53.0 (22)	<b>7:32.8</b>	59.6
22.	103	<b>KUNČÍKOVÁ Magdalena</b>		2010	SPVR	3:40.1 (23)	3:53.2 (23)	<b>7:33.4</b>	1:00.2
23=	90	<b>MALÍKOVÁ Eila</b>		2010	SCPL	3:41.6 (24)	3:55.7 (26)	<b>7:37.3</b>	1:04.1
23=	96	<b>KREMSOVÁ Kateřina</b>		2010	SWSL	3:37.7 (20)	3:59.5 (34)	<b>7:37.3</b>	1:04.1
25.	86	<b>ENDRYCHOVÁ Veronika</b>		2010	DULI	3:39.4 (21)	3:58.0 (30)	<b>7:37.5</b>	1:04.3
26.	84	<b>RŮŽIČKOVÁ Jana</b>		2010	SNKV	3:48.6 (40)	3:49.1 (20)	<b>7:37.7</b>	1:04.5
27.	102	<b>KLOUZOVÁ Kamila</b>		2010	STUD	3:52.0 (49)	3:47.0 (18)	<b>7:39.0</b>	1:05.8
28.	108	<b>MIŠEKOVÁ Lucie</b>		2010	RAVY	3:43.7 (29)	3:59.3 (33)	<b>7:43.0</b>	1:09.8
29.	81	<b>MOHVALDOVÁ Vendula</b>		2010	HSKB	3:48.7 (41)	3:54.5 (24)	<b>7:43.2</b>	1:10.0
30.	88	<b>KERELOVÁ Kristýna</b>		2010	DULI	3:43.4 (28)	4:01.4 (37)	<b>7:44.8</b>	1:11.6
31.	107	<b>VYTLAČILOVÁ Adéla</b>		2010	ROPU	3:44.4 (33)	4:01.3 (36)	<b>7:45.8</b>	1:12.6
32.	99	<b>KOPŘIVOVÁ Adéla</b>		2010	NMNM	3:47.5 (35)	3:58.5 (32)	<b>7:46.0</b>	1:12.8
33.	89	<b>ŠPONAROVÁ Magdaléna</b>		2010	LOTE	3:47.5 (36)	3:58.5 (31)	<b>7:46.1</b>	1:12.9
34=	93	<b>STEHLÍKOVÁ Aneta</b>		2010	SKST	3:48.5 (38)	3:58.0 (29)	<b>7:46.6</b>	1:13.4
34=	95	<b>ŠPERLOVÁ Anna</b>		2010	SNKV	3:51.0 (47)	3:55.6 (25)	<b>7:46.6</b>	1:13.4
36=	94	<b>VODRÁŽKOVÁ Barbora</b>		2010	UKPL	3:36.0 (19)	4:11.1 (47)	<b>7:47.2</b>	1:14.0
36=	97	<b>VIČANOVÁ Barbora</b>		2010	SKVM	3:45.8 (34)	4:01.3 (35)	<b>7:47.2</b>	1:14.0
38.	83	<b>KRTIČKOVÁ Johana</b>		2010	SKIJ	3:43.9 (31)	4:03.7 (38)	<b>7:47.7</b>	1:14.5
39.	91	<b>MICHLOVÁ Tereza</b>		2010	SKSK	3:41.7 (25)	4:08.2 (42)	<b>7:49.9</b>	1:16.7
40.	110	<b>ČECHOVÁ Anna</b>		2010	SCPL	3:53.1 (52)	3:57.2 (28)	<b>7:50.3</b>	1:17.1
41.	124	<b>RYBÍNOVÁ Anežka</b>		2010	SKHA	3:48.9 (42)	4:07.0 (39)	<b>7:56.0</b>	1:22.8
42.	100	<b>HROUDOVÁ Anežka</b>		2010	DULI	3:42.7 (27)	4:14.7 (52)	<b>7:57.5</b>	1:24.3
43.	119	<b>HAMÁČKOVÁ Alžběta</b>		2010	SKHA	3:51.2 (48)	4:07.3 (40)	<b>7:58.5</b>	1:25.3
44.	118	<b>BLAHOUTOVÁ Klára</b>		2010	SNKV	3:50.5 (45)	4:09.5 (44)	<b>8:00.0</b>	1:26.8

# Žákyně starší 2010

## 3 km volně



### Technická data

Homologace -----  
 Okruhy 2 x 1,3 km  
 HD, MC, TC -----

Start, konec 10:03, 10:52  
 Počasí oblačno

Poř.	Číslo	Jméno	Reg.	Roč.	Klub	1,3 km	2. kolo	Čas	Ztráta
45.	85	SMUTNÁ Adina		2010	SKPU	3:49.0 (43)	4:11.1 (46)	8:00.1	1:26.9
46.	87	LEDEROVÁ Aneta		2010	SKJA	3:42.6 (26)	4:17.6 (56)	8:00.2	1:27.0
47.	104	VALENTOVÁ Ema		2010	SPVR	3:54.1 (53)	4:09.9 (45)	8:04.1	1:30.9
48.	114	LEBEDOVÁ Veronika		2010	RAVY	3:55.7 (55)	4:08.5 (43)	8:04.2	1:31.0
49.	117	BARTOŠOVÁ Kristýna		2010	JBCN	3:50.3 (44)	4:14.1 (51)	8:04.4	1:31.2
50.	109	JONÁŠOVÁ Štěpánka		2010	TJTA	3:52.6 (50)	4:15.3 (55)	8:08.0	1:34.8
51.	101	PREISLEROVÁ Karolína		2010	SKIJ	3:54.8 (54)	4:14.0 (50)	8:08.8	1:35.6
52.	122	PETÍŘOVÁ Klára		2010	LSKL	3:50.7 (46)	4:18.2 (58)	8:09.0	1:35.8
53.	116	SKÁLOVÁ Monika		2010	SKSK	4:01.9 (58)	4:07.9 (41)	8:09.8	1:36.6
54.	115	HURTOVÁ Ema		2010	SOKN	3:48.5 (39)	4:23.6 (62)	8:12.2	1:39.0
55.	140	HAMERSKÁ Adéla		2010	ZDAS	4:01.0 (56)	4:11.4 (48)	8:12.4	1:39.2
56.	98	BUDINOVÁ Barbora		2010	DULI	3:52.7 (51)	4:22.5 (60)	8:15.2	1:42.0
57.	130	KNÁPKOVÁ Anežka		2010	SPLE	4:02.0 (59)	4:13.8 (49)	8:15.9	1:42.7
58.	133	JAKLOVÁ Sofie Viktorie		2010	ROPU	4:03.1 (62)	4:14.9 (54)	8:18.1	1:44.9
59.	92	VRBATOVÁ Barbora		2010	SPVR	3:48.4 (37)	4:31.6 (66)	8:20.0	1:46.8
60.	123	BŘEČKOVÁ Ellen		2010	SOSY	4:04.4 (63)	4:17.8 (57)	8:22.2	1:49.0
61.	136	STARÁ Klára		2010	LSKL	4:03.1 (61)	4:23.6 (63)	8:26.7	1:53.5
62.	120	ŘEŽÁBOVÁ Nikola		2010	SOSY	4:10.2 (67)	4:20.3 (59)	8:30.6	1:57.4
63.	105	SVOBODOVÁ Alena		2010	FEJE	4:03.0 (60)	4:29.6 (65)	8:32.6	1:59.4
64.	112	HURTOVÁ Alice		2010	SKVM	4:10.3 (68)	4:23.1 (61)	8:33.4	2:00.2
65.	113	BARTOVÁ Nela		2010	LSKL	4:10.7 (69)	4:26.9 (64)	8:37.7	2:04.5
66.	111	PŘIKRYLOVÁ Maya		2010	DULI	4:05.6 (64)	4:32.3 (67)	8:38.0	2:04.8
67.	137	ABSOLONOVÁ Beata Eva		2010	SKPU	4:01.7 (57)	4:39.3 (70)	8:41.0	2:07.8
68.	128	BAROCHOVÁ Vanesa		2010	LSKL	4:09.5 (65)	4:32.6 (68)	8:42.2	2:09.0
69.	141	STRNADOVÁ Natálie		2010	SKBB	4:27.9 (74)	4:14.7 (53)	8:42.7	2:09.5
70.	106	SLEZÁKOVÁ Barbora		2010	SWSL	4:09.9 (66)	4:34.8 (69)	8:44.8	2:11.6
71.	125	PINDUROVÁ Anna		2010	DLOM	4:18.0 (70)	4:48.4 (72)	9:06.4	2:33.2
72.	121	LEMSTROVÁ Ellen Joy		2010	RDRY	4:24.0 (72)	4:50.2 (73)	9:14.2	2:41.0
73.	131	KALÁŠKOVÁ Kornélie		2010	PBKL	4:21.8 (71)	4:52.5 (75)	9:14.3	2:41.1
74.	127	DOBEŠOVÁ Johanka		2010	HSKB	4:30.4 (76)	4:47.7 (71)	9:18.2	2:45.0
75.	129	KOLEČKOVÁ Barbora		2010	GZUB	4:26.6 (73)	4:59.8 (77)	9:26.5	2:53.3
76.	132	ZÁVADOVÁ Kateřina		2010	GZUB	4:31.9 (77)	4:54.8 (76)	9:26.7	2:53.5
77.	139	NEDVĚDOVÁ Natálie		2010	DULI	4:37.7 (78)	4:50.5 (74)	9:28.3	2:55.1
78.	134	ŠIMKOVÁ Veronika		2010	LSKL	4:29.9 (75)	5:09.6 (78)	9:39.5	3:06.3
79.	135	KOLASOVÁ Vanesa		2010	DLOM	5:02.4 (79)	5:15.7 (79)	10:18.1	3:44.9
80.	138	KASZPER Izabela		2010	SKIM	5:14.2 (80)	5:19.2 (80)	10:33.4	4:00.2
81.	126	METELKOVÁ Šárka		2010	RDRY	5:17.5 (81)	5:36.5 (81)	10:54.0	4:20.8

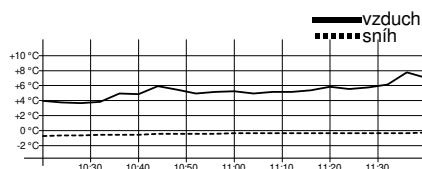
Výkonnostní třída do času do místa

I.	7:12.5	(14.)
II.	7:32.1	(20.)
III.	8:31.1	(62.)

Přihlášeno: 81 Startovalo: 81 Klasifikováno: 81 DNS: 0 DNF: 0 DSQ: 0

# Žákyně starší 2009 U15

## 4 km volně



### Technická data

Homologace	----
Okruhy	3 x 1,3 km
HD, MC, TC	----
Start, konec	10:48, 11:31
Počasí	oblačno

Poř.	Číslo	Jméno	Roč.	Klub	1,3 km	2. kolo	2,6 km	3. kolo	Čas	Ztráta
------	-------	-------	------	------	--------	---------	--------	---------	-----	--------

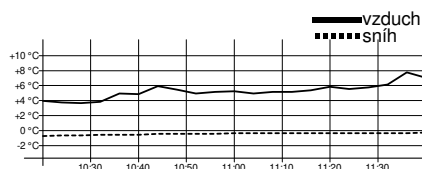
Mistrem České republiky pro rok 2024 se stává HORKÁ Lucie, Olfin Car Ski Team Trutnov

1.	14	<b>HORKÁ Lucie</b>	2009	TRUT	3:21.1 (3)	3:33.1 (1)	6:54.3 (2)	3:37.6 (2)	<b>10:32.0</b>	
2.	10	<b>PLECHÁČOVÁ Nikola</b>	2009	SKIJ	3:17.4 (1)	3:37.9 (3)	6:55.4 (3)	3:41.2 (3)	<b>10:36.6</b>	4.6
3.	11	<b>DLOUHÁ Daniela</b>	2009	LSKL	3:17.8 (2)	3:36.3 (2)	6:54.1 (1)	3:43.1 (4)	<b>10:37.3</b>	5.3
4.	2	<b>NOVÁKOVÁ Nela</b>	2009	JBCN	3:21.5 (4)	3:38.7 (5)	7:00.2 (4)	3:37.6 (1)	<b>10:37.8</b>	5.8
5.	6	<b>BROŽOVÁ Adéla</b>	2009	LSKL	3:25.2 (8)	3:38.4 (4)	7:03.6 (6)	3:44.1 (5)	<b>10:47.8</b>	15.8
6.	7	<b>ŽILINSKÁ Nikola</b>	2009	LOTE	3:24.0 (6)	3:39.0 (6)	7:03.0 (5)	3:44.9 (6)	<b>10:47.9</b>	15.9
7.	19	<b>JANDUROVÁ Veronika</b>	2009	SPVR	3:24.4 (7)	3:51.4 (12)	7:15.8 (7)	3:50.5 (9)	<b>11:06.4</b>	34.4
8.	1	<b>SALABOVÁ Pavlína</b>	2009	SKIJ	3:30.0 (10)	3:47.0 (8)	7:17.0 (10)	3:51.0 (10)	<b>11:08.0</b>	36.0
9.	5	<b>MENCLOVÁ Luisa</b>	2009	SCPL	3:38.8 (17)	3:44.1 (7)	7:22.9 (12)	3:47.2 (7)	<b>11:10.1</b>	38.1
10.	8	<b>MAREČKOVÁ Olivie</b>	2009	SKIJ	3:30.5 (11)	3:51.1 (11)	7:21.7 (11)	3:50.0 (8)	<b>11:11.8</b>	39.8
11.	12	<b>SUCHARDOVÁ Ella</b>	2009	SKIJ	3:26.2 (9)	3:50.1 (10)	7:16.3 (8)	4:02.7 (17)	<b>11:19.0</b>	47.0
12.	9	<b>LUKEŠOVÁ Natálie</b>	2009	SKIJ	3:23.4 (5)	3:53.4 (16)	7:16.9 (9)	4:02.7 (18)	<b>11:19.7</b>	47.7
13.	3	<b>KADLECOVÁ Žofie</b>	2009	SCPL	3:40.4 (18)	3:49.1 (9)	7:29.5 (14)	3:51.7 (12)	<b>11:21.3</b>	49.3
14.	24	<b>ŠVAGEROVÁ Anna</b>	2009	SKVM	3:37.3 (15)	3:54.5 (17)	7:31.8 (15)	3:51.5 (11)	<b>11:23.4</b>	51.4
15.	15	<b>TOMÁŠKOVÁ Karolína</b>	2009	SPVR	3:36.5 (14)	3:52.7 (14)	7:29.3 (13)	3:57.6 (16)	<b>11:27.0</b>	55.0
16.	18	<b>KUČEROVÁ Kateřina</b>	2009	ZDRP	3:42.3 (19)	4:00.0 (19)	7:42.3 (20)	3:53.8 (13)	<b>11:36.2</b>	1:04.2
17.	4	<b>LOŠŤÁKOVÁ Ela</b>	2009	SNKV	3:46.3 (28)	3:53.4 (15)	7:39.8 (18)	3:56.6 (14)	<b>11:36.4</b>	1:04.4
18.	13	<b>MUDROVÁ Beáta</b>	2009	FEJE	3:49.0 (32)	3:51.4 (13)	7:40.5 (19)	3:57.2 (15)	<b>11:37.8</b>	1:05.8
19.	23	<b>KRÁČMAROVÁ Anna</b>	2009	BKLM	3:37.5 (16)	3:56.9 (18)	7:34.4 (17)	4:04.7 (19)	<b>11:39.2</b>	1:07.2
20.	43	<b>BORČICKÁ Denisa</b>	2009	SWSL	3:33.0 (12)	4:01.0 (20)	7:34.0 (16)	4:08.8 (21)	<b>11:42.8</b>	1:10.8
21.	27	<b>VANIČKOVÁ Zuzana</b>	2009	SPVR	3:43.9 (24)	4:01.4 (21)	7:45.4 (21)	4:09.9 (22)	<b>11:55.3</b>	1:23.3
22.	22	<b>PROKEŠOVÁ Adéla</b>	2009	SKIJ	3:45.8 (26)	4:03.5 (22)	7:49.3 (23)	4:06.9 (20)	<b>11:56.3</b>	1:24.3
23.	21	<b>BLAŽEJOVÁ Terezie</b>	2009	DULI	3:42.7 (20)	4:07.5 (24)	7:50.2 (24)	4:12.0 (23)	<b>12:02.2</b>	1:30.2
24.	17	<b>GAISLEROVÁ Hana</b>	2009	LOTE	3:36.4 (13)	4:11.0 (25)	7:47.4 (22)	4:26.4 (34)	<b>12:13.8</b>	1:41.8
25.	44	<b>PORKERTOVIKÁ Viktorie</b>	2009	JBCN	3:52.6 (35)	4:07.0 (23)	7:59.6 (27)	4:14.9 (24)	<b>12:14.6</b>	1:42.6
26.	45	<b>URBANOVIKÁ Anna</b>	2009	SPLE	3:46.9 (29)	4:14.8 (29)	8:01.7 (30)	4:18.9 (27)	<b>12:20.6</b>	1:48.6
27.	29	<b>BROŽIKOVÁ Barbora</b>	2009	SKIJ	3:43.2 (21)	4:11.4 (27)	7:54.6 (25)	4:26.6 (35)	<b>12:21.2</b>	1:49.2
28.	30	<b>ŠIROKÁ Magdaléna</b>	2009	JBCN	3:44.7 (25)	4:15.1 (30)	7:59.8 (28)	4:21.6 (31)	<b>12:21.5</b>	1:49.5
29.	42	<b>SVOBODOVÁ Klára</b>	2009	SPLE	3:43.2 (22)	4:17.5 (33)	8:00.7 (29)	4:21.4 (30)	<b>12:22.1</b>	1:50.1
30.	16	<b>MORAVCOVÁ Bára</b>	2009	SKSV	3:45.8 (27)	4:11.0 (26)	7:56.9 (26)	4:29.3 (41)	<b>12:26.2</b>	1:54.2
31.	28	<b>VONDRUŠKOVÁ Veronika</b>	2009	SKSV	3:47.5 (30)	4:23.4 (38)	8:10.9 (33)	4:18.4 (25)	<b>12:29.4</b>	1:57.4
32.	26	<b>ŠIROVÁ Marie</b>	2009	DULI	3:51.6 (33)	4:21.4 (35)	8:13.0 (35)	4:18.4 (26)	<b>12:31.5</b>	1:59.5
33.	33	<b>BLAŽKOVÁ Monika</b>	2009	SKJA	3:55.6 (37)	4:16.0 (31)	8:11.6 (34)	4:20.6 (28)	<b>12:32.2</b>	2:00.2
34.	25	<b>GULTOVÁ Eliška</b>	2009	BKLM	3:52.0 (34)	4:16.8 (32)	8:08.8 (32)	4:27.2 (37)	<b>12:36.1</b>	2:04.1
35.	39	<b>JELÍNKOVÁ Aneta</b>	2009	SWSL	4:06.4 (46)	4:12.8 (28)	8:19.3 (37)	4:20.6 (29)	<b>12:40.0</b>	2:08.0
36.	51	<b>ŠRŮTKOVÁ Vendula</b>	2009	BKLM	3:53.8 (36)	4:21.9 (36)	8:15.7 (36)	4:26.1 (33)	<b>12:41.9</b>	2:09.9
37.	20	<b>ŘEHOŘOVÁ Štěpánka</b>	2009	JBCN	3:43.9 (23)	4:21.4 (34)	8:05.3 (31)	4:36.8 (46)	<b>12:42.1</b>	2:10.1
38.	37	<b>EIGNEROVÁ Eliška</b>	2009	SKSV	3:57.3 (38)	4:25.0 (40)	8:22.4 (38)	4:27.1 (36)	<b>12:49.5</b>	2:17.5
39.	40	<b>JENÍKOVÁ Amálie</b>	2009	SKHA	4:01.7 (42)	4:30.0 (44)	8:31.7 (43)	4:22.8 (32)	<b>12:54.6</b>	2:22.6
40.	56	<b>MOLKOVÁ Dorota</b>	2009	ROPU	4:00.8 (39)	4:27.6 (42)	8:28.4 (40)	4:27.8 (38)	<b>12:56.2</b>	2:24.2
41.	50	<b>BARTÁKOVÁ Vanessa</b>	2009	PBKL	4:04.8 (43)	4:22.9 (37)	8:27.8 (39)	4:31.6 (43)	<b>12:59.4</b>	2:27.4
42.	36	<b>KOUTNÍKOVÁ Eva Rozáři</b>	2009	SPLE	4:07.2 (47)	4:25.4 (41)	8:32.6 (45)	4:28.3 (39)	<b>13:01.0</b>	2:29.0
43.	34	<b>BERNÁTOVÁ Vendula</b>	2009	SOKN	4:07.7 (50)	4:24.6 (39)	8:32.3 (44)	4:29.0 (40)	<b>13:01.4</b>	2:29.4
44.	35	<b>KŘIČKOVÁ Nela</b>	2009	BKLM	4:01.0 (41)	4:30.4 (45)	8:31.5 (42)	4:30.4 (42)	<b>13:02.0</b>	2:30.0



# Žákyně starší 2009 U15

## 4 km volně



### Technická data

Homologace	----
Okruhy	3 x 1,3 km
HD, MC, TC	----
Start, konec	10:48, 11:31
Počasí	oblačno

Poř.	Číslo	Jméno	Roč.	Klub	1,3 km	2. kolo	2,6 km	3. kolo	Čas	Ztráta
45.	31	POHLOVÁ Matylda	2009	SKIP	4:00.8 (40)	4:29.8 (43)	8:30.6 (41)	4:34.4 (45)	<b>13:05.1</b>	2:33.1
46.	58	PRECLÍKOVÁ Marie	2009	PBKL	4:07.9 (51)	4:31.2 (46)	8:39.2 (46)	4:41.4 (50)	<b>13:20.7</b>	2:48.7
47.	57	KUBOVÁ Klára	2009	SPLE	4:07.4 (49)	4:43.0 (50)	8:50.5 (51)	4:34.1 (44)	<b>13:24.6</b>	2:52.6
48.	38	MOUČKOVÁ Libuše	2009	LOTE	4:07.3 (48)	4:34.0 (47)	8:41.3 (48)	4:48.2 (53)	<b>13:29.6</b>	2:57.6
49.	48	BENDOVIÁ Veronika	2009	JBCN	3:47.7 (31)	4:51.8 (55)	8:39.6 (47)	4:50.1 (54)	<b>13:29.7</b>	2:57.7
50.	53	PEKOVÁ Vanda	2009	SKSV	4:05.6 (44)	4:44.2 (52)	8:49.9 (50)	4:41.1 (49)	<b>13:31.1</b>	2:59.1
51.	52	JAKUBÍKOVÁ Magda	2009	SKIM	4:06.4 (45)	4:41.9 (49)	8:48.3 (49)	4:47.9 (52)	<b>13:36.2</b>	3:04.2
52.	55	KÁLALOVÁ Alexandra	2009	SOSY	4:19.1 (55)	4:44.8 (53)	9:04.0 (53)	4:37.4 (47)	<b>13:41.4</b>	3:09.4
53.	59	MRÁZOVÁ Ema	2009	ZDRP	4:16.1 (54)	4:41.8 (48)	8:57.9 (52)	4:50.3 (55)	<b>13:48.3</b>	3:16.3
54.	32	HAVRÁNKOVÁ Anna	2009	DULI	4:28.2 (57)	4:43.2 (51)	9:11.5 (55)	4:38.0 (48)	<b>13:49.5</b>	3:17.5
55.	54	BERANOVÁ Sára	2009	SKIP	4:12.4 (52)	4:53.7 (57)	9:06.1 (54)	4:58.7 (56)	<b>14:04.8</b>	3:32.8
56.	46	JINDŘIŠKOVÁ Blanka	2009	HSKB	4:37.3 (58)	4:48.8 (54)	9:26.2 (58)	4:42.0 (51)	<b>14:08.3</b>	3:36.3
57.	47	KUIPER Simona Jana	2009	ZDRP	4:19.5 (56)	4:53.6 (56)	9:13.2 (57)	5:01.2 (57)	<b>14:14.4</b>	3:42.4
58.	41	ŠUPINOVÁ Kateřina	2009	SOKN	4:14.8 (53)	4:56.7 (58)	9:11.5 (56)	5:03.1 (58)	<b>14:14.7</b>	3:42.7
59.	49	FILIPOVÁ Vítězslava	2009	SKBR	5:19.1 (59)	5:37.8 (59)	10:56.9 (59)	5:52.5 (59)	<b>16:49.4</b>	6:17.4
DNS	60	HAMÁČKOVÁ Anna	2009	SPVR					nestartoval(a)	

Výkonnostní třída do času do místa

I.	11:35.2	(15.)
II.	12:06.7	(23.)
III.	13:41.6	(52.)

Přihlášeno: 60

Startovalo: 59

Klasifikováno: 59

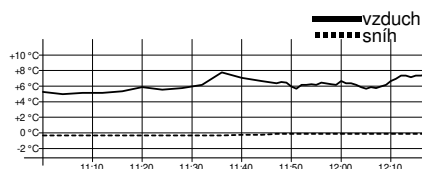
DNS: 1

DNF: 0

DSQ: 0

# Žáci starší 2011

## 4 km volně



### Technická data

Homologace	----
Okruhy	3 x 1,3 km
HD, MC, TC	----
Start, konec	11:28, 12:07
Počasí	oblačno

Poř.	Číslo	Jméno	Roč.	Klub	1,3 km	2. kolo	2,6 km	3. kolo	Čas	Ztráta
1.	78	PACHOLÍK Max	2011	STUD	3:20.9 (1)	3:28.7 (1)	6:49.7 (1)	3:36.3 (1)	<b>10:26.0</b>	
2.	75	ŠOULA Jakub	2011	SKST	3:39.6 (4)	3:49.3 (2)	7:28.9 (2)	3:50.9 (3)	<b>11:19.8</b>	53.8
3.	79	MACEK Šimon	2011	SOSY	3:46.9 (8)	3:55.2 (3)	7:42.1 (5)	3:48.7 (2)	<b>11:30.9</b>	1:04.9
4.	74	JANÍČEK Rostislav	2011	DDMP	3:36.3 (2)	3:58.8 (5)	7:35.2 (3)	3:59.8 (5)	<b>11:35.0</b>	1:09.0
5.	76	HORÁČEK Jan	2011	TRUT	3:42.1 (5)	3:58.6 (4)	7:40.7 (4)	3:56.7 (4)	<b>11:37.5</b>	1:11.5
6.	82	PEŇÁZ Jan	2011	FEJE	3:39.5 (3)	4:02.6 (7)	7:42.2 (6)	4:03.5 (7)	<b>11:45.8</b>	1:19.8
7.	72	HAMÁČEK Matěj	2011	TRUT	3:53.2 (11)	4:00.6 (6)	7:53.9 (8)	4:02.2 (6)	<b>11:56.2</b>	1:30.2
8.	93	BIDLAS Marek	2011	SKST	3:43.1 (6)	4:07.0 (9)	7:50.2 (7)	4:20.6 (12)	<b>12:10.8</b>	1:44.8
9.	71	LUKEŠ Jakub	2011	SKIJ	3:48.2 (9)	4:07.3 (11)	7:55.5 (9)	4:15.6 (11)	<b>12:11.1</b>	1:45.1
10.	83	SVOBODA Jiří	2011	SPLE	4:00.9 (19)	4:07.1 (10)	8:08.1 (13)	4:05.0 (8)	<b>12:13.2</b>	1:47.2
11.	80	VOCELKA Patrik	2011	SKSV	3:53.7 (13)	4:07.0 (8)	8:00.7 (11)	4:12.6 (9)	<b>12:13.4</b>	1:47.4
12.	81	SUCHODOL Kryštof	2011	SPLE	3:53.3 (12)	4:07.7 (12)	8:01.0 (12)	4:14.3 (10)	<b>12:15.3</b>	1:49.3

Mistrem České republiky pro rok 2024 se stává PACHOLÍK Max, TJ Sokol Studenec

25.2.2024

Harrachov

TJ Dukla Liberec z.s., TJ Jiskra Harrachov z.s.

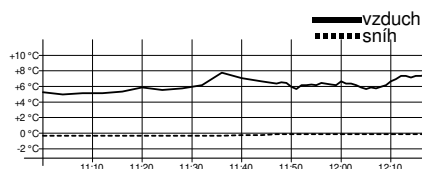
timing by sport-casomira.cz

25.2.2024 13:29

Strana 6 z 11

# Žáci starší 2011

## 4 km volně



### Technická data

Homologace	----
Okruhy	3 x 1,3 km
HD, MC, TC	----
Start, konec	11:28, 12:07
Počasí	oblačno

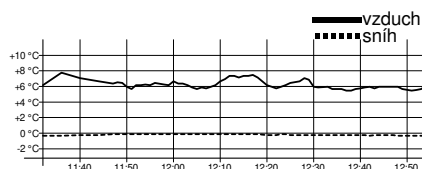
Poř.	Číslo	Jméno	Roč.	Klub	1,3 km	2. kolo	2,6 km	3. kolo	Čas	Ztráta
13.	90	KOHOUTEK Adam	2011	TRUT	3:49.2 (10)	4:11.2 (13)	8:00.5 (10)	4:21.9 (13)	<b>12:22.4</b>	1:56.4
14.	77	MRŮZEK Šimon	2011	SPVR	3:55.2 (15)	4:18.3 (14)	8:13.5 (14)	4:32.9 (19)	<b>12:46.5</b>	2:20.5
15.	85	RIEDL Kryštof	2011	SKVM	4:02.3 (20)	4:20.4 (15)	8:22.8 (16)	4:26.1 (14)	<b>12:48.9</b>	2:22.9
16.	84	KŘEPELA Jiří	2011	SKSK	3:53.9 (14)	4:28.1 (18)	8:22.0 (15)	4:30.1 (17)	<b>12:52.2</b>	2:26.2
17.	98	VÁCHA Jan	2011	SPLE	4:04.6 (22)	4:23.6 (16)	8:28.2 (18)	4:28.2 (15)	<b>12:56.5</b>	2:30.5
18.	94	PELOUCH Filip	2011	JBCN	4:00.8 (18)	4:24.2 (17)	8:25.1 (17)	4:38.8 (23)	<b>13:04.0</b>	2:38.0
19.	100	UMAN Jaroslav	2011	SKHA	4:08.2 (25)	4:29.5 (19)	8:37.8 (21)	4:29.7 (16)	<b>13:07.6</b>	2:41.6
20.	87	HŘEBÍK Michal	2011	SKJA	3:56.6 (16)	4:37.6 (23)	8:34.3 (19)	4:34.1 (20)	<b>13:08.5</b>	2:42.5
21.	104	NEVRLÝ Jakub	2011	ROPU	4:02.6 (21)	4:38.2 (26)	8:40.8 (24)	4:31.8 (18)	<b>13:12.6</b>	2:46.6
22.	73	KOVÁŘ Antonín	2011	SKSV	3:43.7 (7)	4:54.7 (37)	8:38.5 (22)	4:36.5 (22)	<b>13:15.1</b>	2:49.1
23.	96	TOMEŠ Roman	2011	SWSL	4:05.0 (23)	4:31.8 (21)	8:36.9 (20)	4:46.6 (28)	<b>13:23.5</b>	2:57.5
24.	88	STRNAD Václav	2011	BKLM	4:08.4 (26)	4:37.7 (24)	8:46.1 (27)	4:39.6 (24)	<b>13:25.8</b>	2:59.8
25.	105	PORADA Kryštof	2011	SNKV	4:07.2 (24)	4:31.2 (20)	8:38.5 (23)	4:47.6 (29)	<b>13:26.2</b>	3:00.2
26.	92	VOLNÝ Lukáš	2011	GZUB	4:14.7 (29)	4:37.7 (25)	8:52.5 (28)	4:34.2 (21)	<b>13:26.7</b>	3:00.7
27.	86	CHOCHOLOUŠEK Adam	2011	DULI	4:09.6 (28)	4:36.1 (22)	8:45.8 (26)	4:41.2 (25)	<b>13:27.0</b>	3:01.0
28.	89	VÁGNER Ota	2011	LOTE	3:58.0 (17)	4:44.5 (30)	8:42.6 (25)	4:48.9 (30)	<b>13:31.5</b>	3:05.5
29.	91	HORNYCH Ivan	2011	SKIP	4:09.3 (27)	4:43.8 (29)	8:53.2 (29)	4:45.3 (27)	<b>13:38.6</b>	3:12.6
30.	108	KUBIŠTA Anton	2011	BILB	4:20.6 (31)	4:40.8 (27)	9:01.4 (30)	4:44.5 (26)	<b>13:46.0</b>	3:20.0
31.	109	PRAŽÁK Jáchym	2011	JBCN	4:19.6 (30)	4:43.1 (28)	9:02.7 (31)	4:50.6 (31)	<b>13:53.4</b>	3:27.4
32.	110	MITRENGA Samuel	2011	DLOM	4:23.8 (32)	4:50.3 (34)	9:14.1 (32)	4:56.6 (35)	<b>14:10.8</b>	3:44.8
33.	103	KUČERA Vojtěch	2011	LOTE	4:28.3 (34)	4:53.9 (35)	9:22.2 (35)	4:53.7 (33)	<b>14:16.0</b>	3:50.0
34.	95	BERNÁT Vojtěch	2011	SOKN	4:36.1 (38)	4:48.3 (33)	9:24.4 (36)	4:55.1 (34)	<b>14:19.5</b>	3:53.5
35.	101	KOWOLOWSKI Viktor	2011	DLOM	4:30.4 (35)	4:47.7 (32)	9:18.1 (33)	5:02.4 (37)	<b>14:20.5</b>	3:54.5
36.	97	OBDRŽÁLEK Matěj	2011	SKPU	4:26.5 (33)	4:54.2 (36)	9:20.7 (34)	5:06.2 (39)	<b>14:27.0</b>	4:01.0
37.	113	SEDLÁK Václav	2011	PBKL	4:37.7 (40)	4:47.1 (31)	9:24.9 (37)	5:02.4 (36)	<b>14:27.3</b>	4:01.3
38.	99	NOVOTNÝ Ondřej	2011	TRUT	4:35.4 (37)	5:01.8 (41)	9:37.3 (39)	4:53.3 (32)	<b>14:30.6</b>	4:04.6
39.	106	KADLUS Vojtěch	2011	LOTE	4:32.2 (36)	4:59.2 (38)	9:31.5 (38)	5:10.5 (42)	<b>14:42.0</b>	4:16.0
40.	114	BALDRIÁN Josef	2011	ZDRP	4:42.7 (41)	4:59.9 (39)	9:42.7 (41)	5:03.0 (38)	<b>14:45.7</b>	4:19.7
41.	102	LOS Antonín	2011	SKPU	4:36.4 (39)	5:01.7 (40)	9:38.1 (40)	5:08.2 (40)	<b>14:46.3</b>	4:20.3
42.	107	SUSZKA Jiří	2011	DLOM	4:56.5 (43)	5:09.1 (42)	10:05.7 (42)	5:09.9 (41)	<b>15:15.7</b>	4:49.7
43.	111	MÁLEK Vojtěch	2011	TRUT	4:54.9 (42)	5:24.4 (44)	10:19.3 (43)	5:33.1 (45)	<b>15:52.5</b>	5:26.5
44.	116	HONZÍK Martin	2011	SCPL	5:01.0 (44)	5:21.5 (43)	10:22.6 (44)	5:30.7 (44)	<b>15:53.3</b>	5:27.3
45.	115	KLUZ Roman	2011	SKIM	5:11.6 (45)	5:35.3 (45)	10:46.9 (45)	5:28.7 (43)	<b>16:15.6</b>	5:49.6
46.	112	MARYNKA Tomáš	2011	SPVR	5:40.4 (46)	6:09.8 (46)	11:50.2 (46)	6:30.2 (46)	<b>18:20.5</b>	7:54.5

Výkonnostní třída	do času	do místa
I.	11:28.6	(2.)
II.	11:59.8	(7.)
III.	13:33.8	(28.)

Přihlášeno: 46 Startovalo: 46 Klasifikováno: 46 DNS: 0 DNF: 0 DSQ: 0

# Žáci starší 2010

## 4 km volně



### Technická data

Homologace	----
Okruhy	3 x 1,3 km
HD, MC, TC	----
Start, konec	12:01, 12:44
Počasí	oblačno

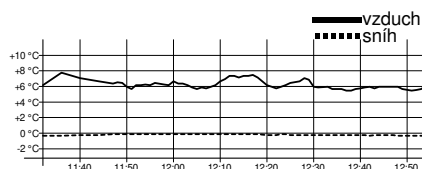
Poř.	Číslo	Jméno	Roč.	Klub	1,3 km	2. kolo	2,6 km	3. kolo	Čas	Ztráta
------	-------	-------	------	------	--------	---------	--------	---------	-----	--------

Mistrem České republiky pro rok 2024 se stává SCHÄFER Josef, TJ Dukla Liberec

1.	11	SCHÄFER Josef	2010	DULI	3:22.2 (1)	3:46.0 (1)	7:08.3 (1)	3:44.5 (1)	<b>10:52.8</b>	
2.	4	ŠTĚRBA Lukáš	2010	SNKV	3:23.8 (2)	3:49.7 (2)	7:13.6 (2)	3:52.2 (2)	<b>11:05.9</b>	13.1
3.	5	KYSELA Vojtěch	2010	TRUT	3:32.9 (4)	3:53.5 (3)	7:26.4 (3)	3:56.5 (3)	<b>11:23.0</b>	30.2
4.	7	VLK Ondřej	2010	SWSL	3:31.8 (3)	4:00.2 (7)	7:32.0 (5)	4:02.9 (6)	<b>11:34.9</b>	42.1
5.	18	HALABRIN Roman	2010	DLOM	3:34.0 (5)	3:57.2 (5)	7:31.3 (4)	4:03.7 (7)	<b>11:35.0</b>	42.2
6.	2	PAVELKA Viktor	2010	FEJE	3:43.0 (9)	3:57.0 (4)	7:40.1 (6)	4:00.6 (4)	<b>11:40.8</b>	48.0
7.	3	SŮRA Antonín	2010	DULI	3:42.7 (8)	4:00.0 (6)	7:42.7 (8)	4:01.5 (5)	<b>11:44.3</b>	51.5
8.	8	KUBÍN Jan	2010	TJTA	3:36.4 (6)	4:04.2 (8)	7:40.7 (7)	4:11.5 (8)	<b>11:52.2</b>	59.4
9.	14	DRDA Filip	2010	SKJA	3:40.2 (7)	4:07.2 (9)	7:47.5 (9)	4:20.0 (15)	<b>12:07.5</b>	1:14.7
10.	48	GLEN Mateusz	2010	POL	3:46.4 (10)	4:09.0 (10)	7:55.4 (10)	4:18.4 (13)	<b>12:13.8</b>	1:21.0
11.	20	HADAČ Jakub	2010	SKIJ	3:49.7 (13)	4:13.0 (12)	8:02.7 (12)	4:14.6 (9)	<b>12:17.4</b>	1:24.6
12.	16	BERAN Matěj František	2010	SKIP	3:47.4 (11)	4:16.4 (14)	8:03.9 (13)	4:15.3 (10)	<b>12:19.2</b>	1:26.4
13.	13	VANĚČEK Michal	2010	SKHA	3:50.9 (15)	4:09.8 (11)	8:00.8 (11)	4:20.5 (16)	<b>12:21.3</b>	1:28.5
14.	1	TANDLER Jáchym	2010	DULI	3:48.8 (12)	4:22.5 (23)	8:11.4 (15)	4:17.6 (12)	<b>12:29.0</b>	1:36.2
15.	26	MOTL Václav	2010	SOSK	3:52.9 (16)	4:15.4 (13)	8:08.4 (14)	4:21.1 (17)	<b>12:29.6</b>	1:36.8
16.	25	HALATA Šebestián	2010	SKVM	3:56.8 (17)	4:19.5 (18)	8:16.4 (18)	4:18.9 (14)	<b>12:35.3</b>	1:42.5
17.	12	ŤUPA Adam	2010	NMNM	3:57.3 (18)	4:18.9 (16)	8:16.3 (17)	4:21.2 (18)	<b>12:37.5</b>	1:44.7
18.	10	ZELENKA Matěj	2010	TRUT	3:50.7 (14)	4:21.4 (21)	8:12.2 (16)	4:28.4 (26)	<b>12:40.6</b>	1:47.8
19.	39	VESELÝ Jan	2010	SPLE	4:07.4 (32)	4:17.7 (15)	8:25.1 (23)	4:16.5 (11)	<b>12:41.7</b>	1:48.9
20.	23	HOFFMANN Šimon	2010	SGJB	4:02.7 (25)	4:19.5 (17)	8:22.2 (20)	4:21.8 (19)	<b>12:44.0</b>	1:51.2
21.	32	ŠTEFAN Alois	2010	PBKL	4:01.4 (24)	4:20.0 (19)	8:21.5 (19)	4:25.2 (20)	<b>12:46.7</b>	1:53.9
22.	15	KANĚK Václav	2010	SKBR	4:03.5 (28)	4:20.7 (20)	8:24.3 (22)	4:26.3 (22)	<b>12:50.7</b>	1:57.9
23.	19	KUTLVAŠR Vladimír	2010	SPVR	4:01.2 (23)	4:22.5 (22)	8:23.7 (21)	4:27.7 (24)	<b>12:51.4</b>	1:58.6
24.	6	IGLER Jan	2010	SKSV	3:59.8 (21)	4:32.2 (28)	8:32.1 (26)	4:27.5 (23)	<b>12:59.6</b>	2:06.8
25.	28	MAREČEK Mikuláš	2010	SKIJ	3:59.2 (19)	4:31.7 (27)	8:30.9 (25)	4:30.0 (27)	<b>13:01.0</b>	2:08.2
26.	27	KALOVSKÝ Vladimír	2010	SKBR	4:05.8 (31)	4:29.0 (24)	8:34.9 (28)	4:28.3 (25)	<b>13:03.2</b>	2:10.4
27.	29	VESELÝ Jakub	2010	SPLE	4:15.0 (37)	4:30.5 (26)	8:45.6 (33)	4:25.8 (21)	<b>13:11.4</b>	2:18.6
28.	21	ŽÁK Ondřej	2010	FEJE	4:02.8 (26)	4:32.3 (29)	8:35.2 (29)	4:36.5 (28)	<b>13:11.7</b>	2:18.9
29.	17	SKRBK Matouš	2010	SKJA	3:59.8 (22)	4:29.1 (25)	8:29.0 (24)	4:47.6 (34)	<b>13:16.6</b>	2:23.8
30.	38	PINDUR Viktor	2010	DLOM	3:59.7 (20)	4:34.5 (30)	8:34.2 (27)	4:44.1 (31)	<b>13:18.3</b>	2:25.5
31.	31	POBOŘIL Adam	2010	ROPU	4:03.7 (29)	4:37.2 (31)	8:40.9 (30)	4:39.2 (29)	<b>13:20.2</b>	2:27.4
32.	49	MASOPUST Jiří	2010	KBHA	4:02.8 (27)	4:39.4 (36)	8:42.2 (31)	4:45.0 (32)	<b>13:27.3</b>	2:34.5
33=	22	ANDRESÍK Matyáš	2010	SNKV	4:05.7 (30)	4:38.6 (34)	8:44.3 (32)	4:46.9 (33)	<b>13:31.3</b>	2:38.5
33=	35	DUCHÁČ Patrik	2010	BKLM	4:12.5 (35)	4:38.5 (33)	8:51.0 (34)	4:40.3 (30)	<b>13:31.3</b>	2:38.5
35.	40	HONCŮ Matěj	2010	SWSL	4:11.0 (33)	4:44.3 (37)	8:55.4 (35)	4:48.1 (36)	<b>13:43.5</b>	2:50.7
36.	24	ŠNYTR Antonín	2010	SKJA	4:20.1 (38)	4:37.6 (32)	8:57.7 (36)	4:48.6 (37)	<b>13:46.3</b>	2:53.5
37.	36	SOUČEK Vojtěch	2010	JBCN	4:35.3 (44)	4:38.6 (35)	9:13.9 (38)	4:47.6 (35)	<b>14:01.6</b>	3:08.8
38.	41	RŮCKER Vítek	2010	BKLM	4:20.7 (39)	4:46.4 (38)	9:07.2 (37)	4:55.9 (39)	<b>14:03.1</b>	3:10.3
39.	51	STEVENSON Luke Joshu	2010	JBCN	4:22.8 (41)	4:52.5 (40)	9:15.4 (40)	4:53.5 (38)	<b>14:08.9</b>	3:16.1
40.	37	KŘÍŽ Jakub	2010	NMNM	4:23.2 (42)	4:52.7 (41)	9:16.0 (41)	4:58.6 (41)	<b>14:14.6</b>	3:21.8
41.	44	MAREŠ Jaroslav	2010	SKIP	4:38.9 (46)	4:51.3 (39)	9:30.3 (43)	4:56.5 (40)	<b>14:26.9</b>	3:34.1
42.	45	MAŇHAL Petr	2010	TRUT	4:27.2 (43)	5:04.2 (46)	9:31.4 (44)	4:59.9 (42)	<b>14:31.3</b>	3:38.5
43.	33	SUCHÝ Adam	2010	NMNM	4:22.3 (40)	4:57.7 (42)	9:20.1 (42)	5:16.8 (47)	<b>14:37.0</b>	3:44.2
44.	46	MIKETA Daniel	2010	DLOM	4:14.9 (36)	4:59.4 (44)	9:14.4 (39)	5:24.6 (48)	<b>14:39.1</b>	3:46.3

# Žáci starší 2010

## 4 km volně



### Technická data

Homologace	----
Okruhy	3 x 1,3 km
HD, MC, TC	----
Start, konec	12:01, 12:44
Počasí	oblačno

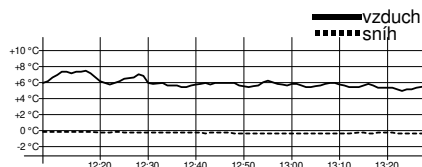
Poř.	Číslo	Jméno	Roč.	Klub	1,3 km	2. kolo	2,6 km	3. kolo	Čas	Ztráta
45.	30	SEIDL Matyas	2010	SOSY	4:41.6 (48)	4:58.4 (43)	9:40.0 (46)	5:02.4 (43)	<b>14:42.5</b>	3:49.7
46.	34	HORČÍK Štěpán	2010	SKPU	4:35.4 (45)	5:03.8 (45)	9:39.3 (45)	5:06.6 (44)	<b>14:45.9</b>	3:53.1
47.	54	ČAPEK Matěj	2010	LOTE	4:39.6 (47)	5:08.0 (47)	9:47.6 (47)	5:07.2 (45)	<b>14:54.9</b>	4:02.1
48.	53	BŘEČKA František	2010	SOSY	4:54.3 (49)	5:14.6 (48)	10:08.9 (48)	5:13.5 (46)	<b>15:22.5</b>	4:29.7
49.	50	DIVÍN Petr	2010	GZUB	4:55.1 (50)	5:25.3 (49)	10:20.5 (49)	5:28.7 (49)	<b>15:49.2</b>	4:56.4
50.	47	VOLMUT Marek	2010	SOSY	5:06.5 (51)	5:32.4 (50)	10:39.0 (50)	5:41.1 (50)	<b>16:20.2</b>	5:27.4
51.	43	SMRŽ Zdeněk	2010	SKPU	5:27.6 (52)	5:46.7 (51)	11:14.4 (51)	5:51.3 (51)	<b>17:05.8</b>	6:13.0
52.	52	DURDIL Daniel	2010	SNKV	5:47.3 (53)	6:03.5 (52)	11:50.8 (52)	6:03.3 (52)	<b>17:54.2</b>	7:01.4
DNF	42	MAZAČ Mikuláš	2010	SWSL	4:11.3 (34)				vzdal(a)	
DNS	9	DUŠEK Ondřej	2010	SPL					nestartoval(a)	
DNS	55	ČERNÍK Marek	2010	SKSK					nestartoval(a)	

Výkonnostní třída	do času	do místa
I.	11:58.0	(8.)
II.	12:30.7	(15.)
III.	14:08.6	(38.)

Přihlášeno: 55 Startovalo: 53 Klasifikováno: 52 DNS: 2 DNF: 1 DSQ: 0

# Žáci starší 2009 U15

## 5 km volně



### Technická data

Homologace	----
Okruhy	4 x 1,3 km
HD, MC, TC	----
Start, konec	12:38, 13:28
Počasí	oblačno

Poř.	Číslo	Jméno	Roč.	Klub	1,3 km	2,6 km	3,9 km	Čas	Ztráta
1.	62	JELÍNEK Antonín	2009	KBTR	3:07.1 (1)	6:28.6 (1)	9:59.4 (1)	<b>13:27.8</b>	
2.	67	JANATA Jan	2009	JBCN	3:18.2 (2)	6:52.7 (2)	10:33.6 (2)	<b>14:15.1</b>	47.3
3.	71	ZUB Vojtěch	2009	SKSV	3:23.3 (3)	7:07.5 (3)	10:50.7 (3)	<b>14:36.1</b>	1:08.3
4.	61	MICHÁLEK Antonín	2009	SKSV	3:33.0 (13)	7:20.0 (11)	11:13.9 (6)	<b>15:05.0</b>	1:37.2
5.	68	BEDNÁŘ William Tobiáš	2009	TRUT	3:24.4 (5)	7:14.0 (4)	11:09.4 (4)	<b>15:07.0</b>	1:39.2
6.	72	CHURAVÝ František	2009	DULI	3:34.4 (14)	7:19.3 (9)	11:17.7 (8)	<b>15:12.6</b>	1:44.8
7.	84	JON Josef	2009	SPVR	3:24.6 (6)	7:17.6 (8)	11:17.5 (7)	<b>15:14.9</b>	1:47.1
8.	70	KYRÁL Šimon	2009	SOSY	3:28.7 (8)	7:19.8 (10)	11:22.4 (9)	<b>15:15.4</b>	1:47.6
9.	77	HOLUB Tobiáš	2009	JBCN	3:34.8 (18)	7:16.1 (6)	11:09.9 (5)	<b>15:20.0</b>	1:52.2
10.	65	HAVLÍK Matyáš	2009	NMNM	3:34.6 (17)	7:30.1 (15)	11:30.8 (13)	<b>15:27.8</b>	2:00.0
11.	73	SIMBARTL Richard	2009	SKIJ	3:28.7 (9)	7:21.2 (12)	11:25.9 (11)	<b>15:34.8</b>	2:07.0
12.	64	HROUDA Adam	2009	DULI	3:31.0 (12)	7:29.2 (14)	11:33.0 (14)	<b>15:36.1</b>	2:08.3
13.	66	GAJDOŠ Matěj	2009	FEJE	3:29.5 (11)	7:26.0 (13)	11:28.4 (12)	<b>15:38.8</b>	2:11.0
14.	104	RÜCK Vilém	2009	KBHA	3:24.3 (4)	7:16.1 (5)	11:24.5 (10)	<b>15:41.2</b>	2:13.4
15.	69	TELECKÝ Vojtěch	2009	SKBR	3:34.5 (15)	7:32.2 (17)	11:36.8 (16)	<b>15:41.4</b>	2:13.6
16.	80	HANČ Jakub	2009	SKHA	3:29.1 (10)	7:31.5 (16)	11:43.4 (17)	<b>15:52.2</b>	2:24.4
17.	74	ŠÍMA Jakub	2009	SKST	3:26.4 (7)	7:17.0 (7)	11:35.9 (15)	<b>15:55.6</b>	2:27.8

25.2.2024

Harrachov

TJ Dukla Liberec z.s., TJ Jiskra Harrachov z.s.

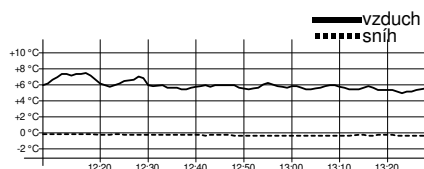
25.2.2024 13:29

timing by sport-casomira.cz

Strana 9 z 11

# Žáci starší 2009 U15

## 5 km volně



### Technická data

Homologace	----
Okruhy	4 x 1,3 km
HD, MC, TC	----
Start, konec	12:38, 13:28
Počasí	oblačno

Poř.	Číslo	Jméno	ReĎoĎ.	Klub	1,3 km	2,6 km	3,9 km	Ĉas	Ztráta
18.	76	CIPRA Antonín	2009	KBTR	3:42.6 (23)	7:44.2 (20)	11:55.4 (19)	16:02.1	2:34.3
19.	63	KOZÁK Vojtěch	2009	SCPL	3:34.6 (16)	7:36.9 (18)	11:48.9 (18)	16:02.7	2:34.9
20.	96	KRISTEJN Jiří	2009	SOKL	3:49.4 (26)	7:55.2 (24)	12:03.7 (21)	16:08.3	2:40.5
21.	102	ŠTRYNCL Adam	2009	SWSL	3:40.7 (20)	7:42.5 (19)	11:57.7 (20)	16:15.0	2:47.2
22.	78	JOHAN Marek	2009	TRUT	3:46.5 (24)	7:53.2 (22)	12:05.1 (22)	16:16.9	2:49.1
23.	83	ŠMEJKAL Štěpán	2009	SNKV	3:42.2 (21)	7:48.0 (21)	12:08.2 (23)	16:28.3	3:00.5
24.	86	ŠABATA František	2009	SKSK	3:42.3 (22)	7:54.6 (23)	12:10.9 (24)	16:33.0	3:05.2
25.	92	KUČERA Jakub	2009	ZDRP	3:59.9 (41)	8:11.9 (30)	12:27.3 (25)	16:45.6	3:17.8
26.	110	HRŮŠA Ondřej	2009	SKIP	3:57.3 (37)	8:10.0 (27)	12:31.2 (26)	16:49.2	3:21.4
27.	85	LISKOVSÝ Václav	2009	SKIP	3:51.7 (29)	8:06.0 (26)	12:31.6 (28)	16:49.5	3:21.7
28.	87	MITTERWALD Petr	2009	SKIP	3:54.9 (33)	8:15.5 (34)	12:39.2 (32)	16:56.0	3:28.2
29.	81	HAVRÁNEK Adam	2009	DULI	3:56.7 (36)	8:12.2 (31)	12:33.6 (30)	16:56.7	3:28.9
30.	94	DOUBRAVA Vojtěch	2009	DULI	3:53.8 (32)	8:13.6 (33)	12:34.4 (31)	16:56.9	3:29.1
31.	97	HOLUBEC Václav	2009	HSKB	3:48.3 (25)	8:10.8 (28)	12:31.6 (27)	16:58.7	3:30.9
32.	95	STEJSKAL Daniel	2009	SPLE	3:58.8 (38)	8:13.1 (32)	12:33.1 (29)	17:00.6	3:32.8
33.	88	SLAVÍK Jakub	2009	DULI	3:49.8 (27)	8:16.7 (36)	12:39.8 (33)	17:01.3	3:33.5
34.	103	ŠKORPIL Marek	2009	ZDRP	3:53.7 (31)	8:19.9 (38)	12:43.0 (35)	17:11.9	3:44.1
35.	79	KAREL Filip	2009	SKIJ	3:50.1 (28)	8:11.4 (29)	12:41.2 (34)	17:12.9	3:45.1
36.	99	NOVOTNÝ Jan	2009	TRUT	4:04.7 (44)	8:22.2 (40)	12:47.9 (38)	17:14.0	3:46.2
37.	89	ENDLER Matěj	2009	SWSL	4:00.2 (42)	8:24.6 (41)	12:52.7 (40)	17:18.8	3:51.0
38.	75	VALOUŠEK Mikoláš	2009	DULI	3:51.7 (30)	8:16.0 (35)	12:47.0 (37)	17:22.8	3:55.0
39.	91	CHALOUPKA Kryštof	2009	SKBR	4:00.8 (43)	8:20.7 (39)	12:45.9 (36)	17:23.5	3:55.7
40.	82	MATOULEK Tomáš	2009	TRUT	3:55.9 (34)	8:19.0 (37)	12:50.4 (39)	17:25.5	3:57.7
41.	114	CALETKA Kryštof	2009	DULI	3:39.5 (19)	7:59.2 (25)	12:58.4 (41)	17:34.9	4:07.1
42.	106	ZÁHOREC Jonáš	2009	FEJE	3:56.2 (35)	8:27.9 (42)	13:07.3 (42)	17:37.7	4:09.9
43.	113	BERNT Bartoloměj	2009	SOSK	3:59.7 (40)	8:34.1 (43)	13:15.6 (43)	17:54.0	4:26.2
44.	98	FEJFUŠA Matěj	2009	SKPU	4:07.3 (46)	8:41.4 (46)	13:23.6 (45)	18:00.4	4:32.6
45.	101	SKÁCEL Jan	2009	DULI	4:12.2 (48)	8:40.9 (45)	13:21.3 (44)	18:10.1	4:42.3
46.	93	SÝKORA Tadeáš	2009	SCPL	4:05.4 (45)	8:40.6 (44)	13:24.0 (46)	18:12.5	4:44.7
47.	90	STUHLÍK Jakub	2009	SKIP	4:12.7 (49)	8:55.3 (49)	13:45.9 (51)	18:15.2	4:47.4
48.	107	JARŮŠEK Sáva	2009	JBCN	4:10.3 (47)	8:48.0 (48)	13:30.9 (47)	18:18.8	4:51.0
49.	116	JELÍNEK Ondřej	2009	DULI	4:13.7 (50)	8:55.9 (50)	13:40.6 (48)	18:23.9	4:56.1
50.	115	KOLLÁR Lubor	2009	SNKV	3:59.2 (39)	8:47.1 (47)	13:43.8 (49)	18:35.6	5:07.8
51.	111	ŠERCL Ondřej	2009	JBCN	4:19.0 (52)	8:58.9 (51)	13:45.3 (50)	18:41.6	5:13.8
52.	108	FERENĈÁK Mikuláš	2009	SKBR	4:16.8 (51)	8:59.2 (52)	14:04.8 (52)	19:05.3	5:37.5
53.	109	ĈAPEK Bartoloměj	2009	SKJA	4:30.9 (53)	9:23.5 (53)	14:18.1 (53)	19:08.3	5:40.5
54.	105	GAJDA Petr	2009	ZDRP	4:32.4 (54)	9:26.9 (54)	14:29.9 (54)	19:31.0	6:03.2
55.	112	TROUTNAR Václav	2009	SKIP	4:38.5 (55)	9:42.3 (55)	14:50.3 (55)	19:56.8	6:29.0
56.	117	UDATNÝ Tomáš	2009	SOSK	5:06.0 (56)	10:38.0 (56)	16:06.7 (56)	21:33.8	8:06.0
DNS	100	HORNYCH Oldřich	2009	SKIP					nestartoval(a)

Výkonnostní třída	do času	do místa
I.	14:48.5	(3.)
II.	15:28.9	(10.)
III.	17:30.1	(40.)

Přihlášeno: 57 Startovalo: 56 Klasifikováno: 56 DNS: 1 DNF: 0 DSQ: 0

---

**Technický delegát  
Tomáš Korbelař**

---

**Sekretář závodu  
Zora Honzlová**